

NEW OR LITTLE KNOWN BUTTERFLIES FROM CHINA (II)

MASAO OKANO

The present paper deals with five Chinese species belonging to the families HesperIIDae, Riodinidae and Nymphalidae. Among them one species and two subspecies are described as new to science and one subspecies is newly added to the fauna of China. The specimens mentioned in this paper are preserved in my collection.

In preparing this paper, I wish to express my gratitude to Prof. Dr. TAKASHI SHIRÔZU, Mr. KIKUMARO OKANO, Mr. JOZABURO OHKURA, Mr. SATOSHI KOIWAYA, Mr. YUKINOBU ABE and Mr. SHUNZO KAMMURI for their kindness rendered in various ways.

HESPERIIDAE

Satarupa omeia sp. nov.

(Pl. 1, figs. 1, 2, ♂; Text-fig. 1, ♂ genitalia)

At first glance, this new species most closely resembles *S. formosibia* STRAND in almost similar appearance, but is separable in the following characters.

Male. On the forewing the cell spot and the spot in space 2 are smaller; the spot in space 3 is larger; the spot in space 2 is placed nearer to the spot in space 3 than to the cell spot as in *S. gopala majasra* FRUHSTORFER; the spots in space 1b are rather smaller. On the hindwing the postdiscal black spots in spaces 3 to 5 are

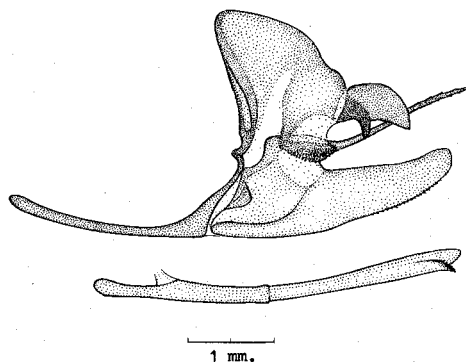


Fig. 1. Male genitalia of *Satarupa omeia* sp. nov.

longer. The male genitalia are also similar to those of *S. formosibia*, but the process of the ampulla is elongated backward beyond the end of the harpe.

Length of forewing: 32 mm., ♂.

Holotype ♂, Emeishan (Omeishan), Sichuan (Szechwan), W. China, 1980.

RIODINIDAE

Dodona durga sinica MOORE

(Pl. 2, figs. 1-4, ♂)

Dodona durga var. LEECH, 1893: 291, pl. 28, fig. 13, ♂. W. China.

Dodona durga loc. f. *sinica*: SEITZ, 1909: 254, pl. 89 d (as *maculosa*), [♂]. C. and W. China.

Dodona durga sinica: STICHEL, 1928: 42. C. and W. China, Tibet.

Dodona durga: KOIWAYA, 1980: 29, pl. 4, fig. 29, ♂. Yunnan (Shilin; Xishan, Kunming).

Specimens examined: 2 ♂, Qufushan, Shandong (Shantung), N. China, June, 1981; 1 ♂, Dongkou, Kunming, Yunnan, May, 1982; 1 ♂, Shilin, Yunnan, August, 1981 (S. KOIWAYA); 4 ♂, Dali (Tali), Yunnan, 1981.

This species is new to the fauna of N. China, but it has already been recorded from Yunnan by KOIWAYA (1980). Among the specimens recorded above, the males from Shandong are identical with those from Yunnan. The female is separable from the male in having the forewing termen more strongly convex. As compared with the W. Chinese male figured by LEECH (1893), the Shandong and Yunnan specimens are smaller (length of forewing, 16.0-18.5 mm. against 19.5 mm.); the streaks and bands on the inner and central areas of the hindwing below are white or faintly yellowish white, while in the LEECH's male they are yellow. The Chinese male figured by SEITZ (1909) is similar to the LEECH's male in size, colouration and markings. On the length of forewing in subsp. *sinica*, STICHEL (1928) says, it is "bis 22 mm."

Dodona dipoea tibetana subsp. nov.

(Pl. 2, figs. 5-8, ♂)

Male. Separable from *D. dipoea dipoea* HEWITSON by the forewing discal and postdiscal spots much larger.

Length of forewing: 20 mm., ♂.

Holotype ♂, Tongmai, Xizang (Tibet), August, 1981.

Paratype 1 ♂, same data as the holotype.

Dodona eugenes venox FRUHSTORFER

(Pl. 2, figs. 9-12, ♂)

Specimens examined: 2 ♂, Tongmai, Xizang (Tibet), August, 1981.

This is the first record of the subspecies from China. The specimens before me from Xizang are not separable from those from Assam.

NYMPHALIDAE

***Acraea issoria yunnana* subsp. nov.**

(Pl. 1, figs. 3-8, ♂)

This is a well marked subspecies of *Acraea issoria* (HÜBNER) occurring in Yunnan.

Closely related to subsp. *sordice* (FRUHSTORFER), but is easily distinguished by the following characters.

Male. On the upper surface the ground colour is paler; the black bordering of both the wings is generally broader; the forewing black spots are generally more strongly developed; a discal series of black spots appear on the hindwing in the extreme form (Pl. 1, fig. 7). On the under surface the hindwing ground colour is whitish, while in subsp. *sordice* it is pale yellow; the submarginal orange band is narrower, and its inner side is more strongly margined with black than in subsp. *sordice*.

Length of forewing: 30-33 mm., ♂.

Holotype ♂, Dali (Tali), Yunnan, 1981.

Paratypes 4 ♂, same data as the holotype.

Literature

- BINGHAM, C.T. 1905. The fauna of British India, including Ceylon and Burma. Butterflies, 1. *Pareba*: 468-470. *Dodona*: 479-489.
- EVANS, W.H. 1949. A catalogue of the Hesperiiidae from Europe, Asia and Australia in the British Museum. *Satarupa*: 121-123.
- FRUHSTORFER, H. 1912, 1914. in SEITZ, A. Die Gross-Schmetterlinge der Erde, 9. *Pareba*: 740-742 (1914). *Dodona*: 775-779 (1914), pl. 139 (1912).
- GAEDE, M. 1930, 1931. in SEITZ, A. Die Gross-Schmetterlinge der Erde, Suppl. 1. *Dodona*: 238 (1930). *Satarupa*: 307-308 (1931).
- KOIWAYA, S. 1980. The butterflies collected by the first expedition to China, 1979. Report of the first entomological expedition to China, 1979: 18-33.
- LEECH, J.H. 1892, 1893. Butterflies of China, Japan and Corea, 1. *Pareba*: 114-116 (1892). *Dodona*: 290-293, pl. 28 (1893).
- SEITZ, A. 1908, 1909. Die Gross-Schmetterlinge der Erde, 1. *Pareba*: 244 (1908), pl. 71 (1909). *Dodona*: 254-255, pl. 89 (1909).
- SEITZ, A. 1922, 1927. Die Gross-Schmetterlinge der Erde, 9. *Satarupa*: 1033-1034 (1927), pl. 163 (1922).
- SHIRÔZU, T. 1953. New or little known butterflies from the North-Eastern Asia, with some synonymic notes, 2. *Sieboldia*, 1: 149-159, pl. 19.
- SHIRÔZU, T. 1960. The butterflies of Formosa in colour. *Satarupa*: 385-387, pl. 74.
- STICHEL, M. 1928. Das Tierreich, 51. Lepidoptera Nemeobiinae. *Dodona*: 35-57.
- TALBOT, G. 1947. The fauna of British India, including Ceylon and Burma. Butterflies, 2 (ed. 2). *Acraea*: 462-467.

Explanation of Plates

- Plate 1. (× 1)
- Fig. 1. *Satarupa omeia* sp. nov., ♂ (holotype). Emeishan, Sichuan, W. China, 1980.
 - Fig. 2. Underside of fig. 1.
 - Fig. 3. *Acraea issoria yunnana* subsp. nov., ♂ (paratype). Dali, Yunnan, 1981.
 - Fig. 4. Underside of fig. 3.
 - Fig. 5. *Acraea issoria yunnana* subsp. nov., ♂ (paratype). Dali, Yunnan, 1981.
 - Fig. 6. Underside of fig. 5.
 - Fig. 7. *Acraea issoria yunnana* subsp. nov., ♂ (holotype). Dali, Yunnan, 1981.
 - Fig. 8. Underside of fig. 7.
- Plate 2. (× 2)
- Fig. 1. *Dodona durga sinica* MOORE, ♂. Dali, Yunnan, 1981.
 - Fig. 2. Ditto, ♂. Dali, Yunnan, 1981.
 - Fig. 3. Underside of fig. 1.
 - Fig. 4. Underside of fig. 2.
 - Fig. 5. *Dodona dipoea tibetana* subsp. nov., ♂ (holotype). Tongmai, Xizang, August, 1981.
 - Fig. 6. Ditto, ♂ (paratype). Tongmai, Xizang, August, 1981.
 - Fig. 7. Underside of fig. 5.
 - Fig. 8. Underside of fig. 6.
 - Fig. 9. *Dodona eugenes venox* FRUHSTORFER, ♂. Tongmai, Xizang, August, 1981.
 - Fig. 10. Ditto, ♂. Tongmai, Xizang, August, 1981.
 - Fig. 11. Underside of fig. 9.
 - Fig. 12. Underside of fig. 10.

