



Probing extended Higgs sectors by the synergy between direct searches at the LHC and precision tests at future lepton colliders

Masashi Aiko^a, Shinya Kanemura^a, Mariko Kikuchi^{b,*},
Kentarou Mawatari^c, Kodai Sakurai^d, Kei Yagyu^a

^a Department of Physics, Osaka University, Toyonaka, Osaka 560-0043, Japan

^b National Institute of Technology, Kitakyushu College, Kitakyushu, Fukuoka 802-0985, Japan

^c Faculty of Education, Iwate University, Morioka, Iwate 020-8550, Japan

^d Institute for Theoretical Physics, Karlsruhe Institute of Technology, 76131 Karlsruhe, Germany

Received 29 October 2020; received in revised form 1 March 2021; accepted 9 March 2021

Available online 18 March 2021

Editor: Hong-Jian He

Abstract

We discuss a possibility that the parameter space of the two Higgs doublet model is significantly narrowed down by considering the synergy between direct searches for additional Higgs bosons at the LHC and its luminosity upgraded operation and precision measurements of the Higgs boson properties at future electron-positron colliders such as the International Linear Collider. We show that, in the case where the coupling constants of the discovered Higgs boson are slightly different from the predicted values in the standard model, most of the parameter space is explored by the direct searches of extra Higgs bosons, in particular for the decays of the extra Higgs bosons into the discovered Higgs boson, and also by the theoretical arguments such as perturbative unitarity and vacuum stability. This can be done because there appears an upper limit on the mass of the extra Higgs bosons as long as the deviation exists in the Higgs boson coupling. We also show that in the alignment limit where all the Higgs boson couplings take the standard model like values most of the parameter space cannot be excluded because most of the Higgs to Higgs decays are suppressed and also there is no upper limit on the masses from the theoretical arguments.

* Corresponding author.

E-mail addresses: m-aikou@het.phys.sci.osaka-u.ac.jp (M. Aiko), kanemu@het.phys.sci.osaka-u.ac.jp (S. Kanemura), kikuchi@kct.ac.jp (M. Kikuchi), mawatari@iwate-u.ac.jp (K. Mawatari), kodai.sakurai@kit.edu (K. Sakurai), yagyu@het.phys.sci.osaka-u.ac.jp (K. Yagyu).

<https://doi.org/10.1016/j.nuclphysb.2021.115375>

0550-3213/© 2021 The Author(s). Published by Elsevier B.V. This is an open access article under the CC BY license (<http://creativecommons.org/licenses/by/4.0/>). Funded by SCOAP³.

© 2021 The Author(s). Published by Elsevier B.V. This is an open access article under the CC BY license (<http://creativecommons.org/licenses/by/4.0/>). Funded by SCOAP³.

Contents

1. Introduction	2
2. Model	4
3. Decays of the Higgs bosons	8
3.1. Running parameters	8
3.2. QCD corrections to the neutral Higgs decays	9
3.3. QCD corrections to the charged Higgs decays	12
3.4. Total decay widths and decay branching ratios	13
4. Direct searches at the LHC	19
4.1. Production cross sections for the additional Higgs bosons	19
4.2. Constraints from the direct searches	22
5. Combined results of direct searches at the HL-LHC and precision tests at the ILC	25
6. Conclusions	30
CRediT authorship contribution statement	31
Declaration of competing interest	31
Acknowledgements	31
Appendix A. Bounds from unitarity and vacuum stability	31
Appendix B. Decay rates at the leading order	32
B.1. Decays of the neutral Higgs bosons	32
B.2. Decays of the charged Higgs bosons	34
References	35

1. Introduction

The current observations at the LHC experiments indicate that properties of the discovered Higgs boson with the mass of 125 GeV coincide with those predicted in the standard model (SM) [1,2]. This, however, does not mean that the Higgs sector in the SM, which plays an essential role in the electroweak (EW) symmetry breaking, is verified. While the minimal Higgs sector is composed of one Higgs doublet field in the SM, there is no principle to determine the structure of the Higgs sector. In fact, it is possible to consider a variety of non-minimal Higgs sectors. Extended Higgs sectors are often introduced in new physics models which can explain observed phenomena beyond the SM, such as neutrino oscillations, dark matter and baryon asymmetry of the Universe. In addition, they also appear in some of the new paradigms motivated from a theoretical problem in the SM; e.g., the hierarchy problem. Therefore, new physics beyond the SM can be revealed by thoroughly testing the Higgs sector.

A definitive probe of extended Higgs sectors would be direct detection of new scalar particles. At the LHC, especially after the discovery of the 125 GeV Higgs boson, direct searches for additional Higgs bosons have been conducted exhaustively in a wide variety of the search channels [3–17]. Observations of such new particles have not been reported yet, leading to constraints on parameters of extended Higgs models such as masses and coupling constants. The

direct searches are still one of the key programs at the LHC as well as at the high-luminosity LHC (HL-LHC) [18].

In addition to the direct searches, extended Higgs sectors can be explored by measuring various properties of the discovered Higgs boson such as cross sections, the width, branching ratios and coupling constants. If deviations from the SM are observed, we can extract upper limits on the mass scale of the second Higgs boson by taking into account theoretical consistencies. Furthermore, by looking at the pattern of the deviation we can extract the structure of the Higgs sector; e.g., the representation of the weak isospin, the number of Higgs fields, and symmetries. To this end, precision measurements of the Higgs boson couplings are most important. Although the current accuracy of the measurements is not enough, typically order 10 (20) percent level for the Higgs boson coupling to weak bosons (third generation fermions) [1,2], it is expected to be improved at the HL-LHC [18] and further significantly at future lepton colliders; e.g., the International Linear Collider (ILC) [19–22], the Future Circular Collider (FCC-ee) [23] and the Circular Electron Positron Collider (CEPC) [24].

It goes without saying that accurate calculations of the Higgs boson couplings are inevitable in order to compare theory predictions with the future precision measurements. It has been well known that QCD corrections to Higgs boson couplings with quarks or gluons can be quite large. For example, QCD corrections to the decay rate of the Higgs boson into gluons at the next-to-leading order (NLO) are about 70% level [25–27]. Thus, QCD corrections must be included for calculations, by which we can discuss the deviation from the SM prediction. On the other hand, EW corrections are typically much smaller than QCD ones, but they have a sensitivity to the structure of the Higgs sector, particularly non-decoupling nature of extra scalar fields. So far, EW corrections to Higgs boson couplings and/or decays have been investigated in models with extended Higgs sectors such as those with extra singlets [28–33], doublets [29,32–49] and triplets [50–54]. Therefore, calculations with both QCD and EW corrections are quite important for the precision measurements in near future, and several numerical tools have been available; e.g., H-COUP [55,56], 2HDECAY [57] and Prophecy4f [58].

In this paper, we investigate the impact of the combined study of direct searches for new particles at hadron colliders and precision measurements of Higgs boson couplings at future lepton colliders. We perform such study including higher-order QCD corrections. We consider two Higgs doublet models (THDMs) as a representative extended Higgs model. The models are one of the well-motivated extensions of the SM, and some of new physics models contain two Higgs doublets, such as the minimal supersymmetric extension of the SM [59–61], models for electroweak baryogenesis [62–69], and those for radiative neutrino mass generation [70–73] and so on. The parameter regions in the THDMs have been explored by direct searches for the additional Higgs bosons at the LEP [74–76] and the LHC [3–11,77–85]. The prospect at the HL-LHC and the ILC has been studied in Ref. [86]. Furthermore, there are studies which discuss the observed data for the discovered Higgs boson at the LHC in the THDMs [81–83,87,88]. The signatures of the additional Higgs bosons at the future lepton colliders have been examined in Refs. [86,89–92].

The observed Higgs boson couplings are consistent with those in the SM under current experimental and theoretical uncertainties [1,2], so that this fact gives a strong motivation to investigate the *alignment* scenario where the Higgs boson couplings are nearly or exactly SM like. In the near alignment region, the decays of the extra Higgs bosons into the discovered Higgs boson such as $A \rightarrow Zh$ and $H \rightarrow hh$ can be dominant, and at the same time the discovered Higgs boson couplings can deviate from the SM predictions. These decay modes of extra Higgs bosons can be well tested at the HL-LHC [93], by which we can set a lower limit on the masses of

extra Higgs bosons. In addition, we can impose an upper limit on the masses [87,94,95] when deviations of the Higgs boson couplings are found at future lepton colliders.

We show that by utilizing the synergy between the direct search for additional Higgs bosons and the precision measurement of the Higgs boson couplings a large portion of the parameter space can be explored in the near alignment region. We also show that in the alignment limit; i.e., all the Higgs boson couplings are exactly same as the SM values, plenty of the parameter space still remains even if the mass of the additional Higgs bosons is around the EW scale. This is because most of the Higgs to Higgs decays are prohibited and also there is no upper limit on masses of additional Higgs bosons.

This paper is organized as follows. In Sec. 2, we define the THDMs and give the Higgs potential, the kinetic terms and the Yukawa interactions. Theoretical constraints from perturbative unitarity and vacuum stability are also discussed. Constraints from flavor physics and previous colliders are summarized. Sec. 3 is devoted to the discussion for decays of the Higgs bosons. We first give the analytic expressions of the decay rates with higher-order QCD corrections and then numerically show total widths and branching ratios of the Higgs bosons. In Sec. 4, we show the excluded region of the parameter space from the direct searches at the LHC Run-II experiments. In Sec. 5, we discuss how the parameter space is widely explored by combining direct searches at the HL-LHC and precision measurements of the Higgs boson couplings at future lepton colliders. Conclusions are given in Sec. 6. In Appendix, we present the analytic expressions for the perturbative unitarity and the vacuum stability conditions (Appendix A) and the decay rates of the Higgs bosons at the leading order (LO) (Appendix B).

2. Model

We discuss the THDM, whose Higgs sector is composed of two isospin doublet scalar fields Φ_1 and Φ_2 . In order to avoid flavor changing neutral currents (FCNCs) at tree level, we impose the Z_2 symmetry [96] ($\Phi_1 \rightarrow +\Phi_1, \Phi_2 \rightarrow -\Phi_2$) which can be softly-broken by a dimensionful parameter in the Higgs potential. The most general Higgs potential under the Z_2 symmetry is given by

$$V = m_1^2 |\Phi_1|^2 + m_2^2 |\Phi_2|^2 - (m_3^2 \Phi_1^\dagger \Phi_2 + \text{h.c.}) + \frac{\lambda_1}{2} |\Phi_1|^4 + \frac{\lambda_2}{2} |\Phi_2|^4 + \lambda_3 |\Phi_1|^2 |\Phi_2|^2 + \lambda_4 |\Phi_1^\dagger \Phi_2|^2 + \left[\frac{\lambda_5}{2} (\Phi_1^\dagger \Phi_2)^2 + \text{h.c.} \right], \quad (1)$$

where m_3^2 is a soft-breaking parameter of the Z_2 symmetry. Throughout this paper, we assume CP-conservation in the Higgs sector, so that the m_3^2 and λ_5 parameters are taken to be real. It is convenient to define the Higgs basis [97–99] as

$$\begin{pmatrix} \Phi_1 \\ \Phi_2 \end{pmatrix} = R(\beta) \begin{pmatrix} \Phi \\ \Phi' \end{pmatrix}, \quad R(\theta) = \begin{pmatrix} c_\theta & -s_\theta \\ s_\theta & c_\theta \end{pmatrix}, \quad (2)$$

where

$$\Phi = \begin{pmatrix} G^+ \\ \frac{v+h'_1+iG^0}{\sqrt{2}} \end{pmatrix}, \quad \Phi' = \begin{pmatrix} H^+ \\ \frac{h'_2+iA}{\sqrt{2}} \end{pmatrix}, \quad (3)$$

with the rotation angle β being determined by $\tan \beta = v_2/v_1$ ($v_i \equiv \sqrt{2}\langle \Phi_i^0 \rangle$, $i = 1, 2$). We introduced short-hand notation for trigonometric functions $s_\theta \equiv \sin \theta$ and $c_\theta \equiv \cos \theta$. In Eq. (3),

Φ contains the vacuum expectation value (VEV) $v \equiv \sqrt{v_1^2 + v_2^2} = (\sqrt{2}G_F)^{-1/2}$ with G_F being the Fermi constant and the Nambu-Goldstone bosons G^\pm and G^0 which are absorbed into the longitudinal component of the W^\pm and Z boson, respectively. On the other hand, Φ' contains the physical charged Higgs boson H^\pm and the CP-odd Higgs boson A . Remaining two states h'_1 and h'_2 are related to the mass eigenstates of the CP-even Higgs bosons via

$$\begin{pmatrix} h'_1 \\ h'_2 \end{pmatrix} = R(\alpha - \beta) \begin{pmatrix} H \\ h \end{pmatrix}, \quad (4)$$

where h can be identified as the discovered Higgs boson with the mass of 125 GeV.

The squared masses of the physical Higgs bosons are expressed as follows:

$$m_{H^\pm}^2 = M^2 - \frac{v^2}{2}(\lambda_4 + \lambda_5), \quad (5)$$

$$m_A^2 = M^2 - v^2\lambda_5, \quad (6)$$

$$m_H^2 = M_{11}^2 c_{\beta-\alpha}^2 + M_{22}^2 s_{\beta-\alpha}^2 - M_{12}^2 s_{2(\beta-\alpha)}, \quad (7)$$

$$m_h^2 = M_{11}^2 s_{\beta-\alpha}^2 + M_{22}^2 c_{\beta-\alpha}^2 + M_{12}^2 s_{2(\beta-\alpha)}, \quad (8)$$

where $M^2 \equiv m_3^2/(s_\beta c_\beta)$ and M_{ij}^2 are the elements of the squared mass matrix in the basis of (h'_1, h'_2) given by

$$M_{11}^2 = v^2(\lambda_1 c_\beta^4 + \lambda_2 s_\beta^4 + 2\lambda_{345} s_\beta^2 c_\beta^2), \quad (9)$$

$$M_{22}^2 = M^2 + \frac{v^2}{4} s_{2\beta}^2 (\lambda_1 + \lambda_2 - 2\lambda_{345}), \quad (10)$$

$$M_{12}^2 = \frac{v^2}{2} s_{2\beta} (-\lambda_1 c_\beta^2 + \lambda_2 s_\beta^2 + \lambda_{345} c_{2\beta}), \quad (11)$$

with $\lambda_{345} \equiv \lambda_3 + \lambda_4 + \lambda_5$. The mixing angle $\beta - \alpha$ can also be expressed by these matrix elements as

$$\tan 2(\beta - \alpha) = -\frac{2M_{12}^2}{M_{11}^2 - M_{22}^2}. \quad (12)$$

We can choose the following six variables as the free parameters:

$$m_H, m_A, m_{H^\pm}, M^2, \tan \beta, s_{\beta-\alpha}, \quad (13)$$

where we define $0 < \beta < \pi/2$ and $0 < \beta - \alpha < \pi$ such that $\tan \beta > 0$ and $0 < s_{\beta-\alpha} \leq 1$.

The kinetic terms for the Higgs doublets are written in the Higgs basis as

$$\mathcal{L}_{\text{kin}} = |D_\mu \Phi_1|^2 + |D_\mu \Phi_2|^2 = |D_\mu \Phi|^2 + |D_\mu \Phi'|^2. \quad (14)$$

The covariant derivative is defined by $D_\mu = \partial_\mu - igI^a W_\mu^a - ig'Y B_\mu$, with the $SU(2)_L$ generator I^a ($a = 1-3$) and the hypercharge Y , from which electric charge Q is derived by $Q = I^3 + Y$. In the expression of D_μ , W_μ^a (g) and B_μ (g') denote the $SU(2)_L$ and $U(1)_Y$ gauge bosons (coupling), respectively. The W^\pm bosons and the neutral gauge bosons are then identified as $W_\mu^\pm = (W_\mu^1 \mp iW_\mu^2)/\sqrt{2}$ and $(Z_\mu, A_\mu)^T = R(\theta_W)(W_\mu^3, B_\mu)^T$, respectively, with θ_W being the Weinberg angle. It is clear from Eq. (3) that the masses of the W^\pm and Z bosons are given only from the term $|D_\mu \Phi|^2$, which also includes the gauge-gauge-scalar type interactions. On

Table 1

Z_2 charge assignments in four types of the Yukawa interactions and the ζ_f ($f = u, d, e$) factors appearing in Eq. (16).

	Q_L	L_L	u_R	d_R	e_R	ζ_u	ζ_d	ζ_e
Type-I	+	+	-	-	-	$\cot \beta$	$\cot \beta$	$\cot \beta$
Type-II	+	+	-	+	+	$\cot \beta$	$-\tan \beta$	$-\tan \beta$
Type-X (lepton specific)	+	+	-	-	+	$\cot \beta$	$\cot \beta$	$-\tan \beta$
Type-Y (flipped)	+	+	-	+	-	$\cot \beta$	$-\tan \beta$	$\cot \beta$

the other hand, the term $|D_\mu \Phi'|^2$, contains the scalar-scalar-gauge type interaction terms such as AZh .

Under the Z_2 symmetry, the Yukawa interaction terms are expressed as

$$\mathcal{L}_Y = -Y_u \bar{Q}_L \tilde{\Phi}_u u_R - Y_d \bar{Q}_L \Phi_d d_R - Y_e \bar{L}_L \Phi_e e_R + \text{h.c.}, \quad (15)$$

where $\tilde{\Phi}_u = i\sigma_2 \Phi_u^*$ with σ_2 being the second Pauli matrix, and $\Phi_{u,d,e}$ denote Φ_1 or Φ_2 . We here do not explicitly show the flavor indices. Using the Higgs basis Eq. (2), they can be rewritten as

$$\mathcal{L}_Y = -Y_u \bar{Q}_L (\tilde{\Phi} + \zeta_u \tilde{\Phi}') u_R - Y_d \bar{Q}_L (\Phi + \zeta_d \Phi') d_R - Y_e \bar{L}_L (\Phi + \zeta_e \Phi') e_R + \text{h.c.}, \quad (16)$$

with $\tilde{\Phi}^{(\prime)} = i\sigma_2 \Phi^{(\prime)*}$. The Yukawa matrices Y_f are related to the mass matrices for fermions by $M_f = Y_f v / \sqrt{2}$ which are diagonalized by unitary transformations of the left and the right handed fermions. Thanks to the Z_2 symmetry, both Φ and Φ' are coupled with a common Yukawa matrix Y_f , so that FCNCs mediated by the neutral Higgs bosons do not appear at tree level. The ζ_f parameters are fixed by specifying the charges of the Z_2 symmetry for fermions, in which there are four independent choices of the charge assignments [100–102], the so-called Type-I, Type-II, Type-X and Type-Y as shown in Table 1.

For the later convenience, we introduce the scaling factors κ_X^ϕ which are defined by the ratio of the Higgs boson couplings at tree level:

$$\kappa_X^\phi \equiv \frac{g_{\phi X \bar{X}}}{g_{h_{\text{SM}} X \bar{X}}}, \quad \phi = h, H, A, \quad (17)$$

where h_{SM} is the Higgs boson in the SM. From the above Lagrangians, the scaling factors can be extracted as follows:

$$\kappa_V^h = s_{\beta-\alpha}, \quad \kappa_V^H = c_{\beta-\alpha}, \quad \kappa_V^A = 0, \quad (18)$$

$$\kappa_f^h = s_{\beta-\alpha} + c_{\beta-\alpha} \zeta_f, \quad \kappa_f^H = c_{\beta-\alpha} - s_{\beta-\alpha} \zeta_f, \quad \kappa_f^A = -2i I_f \zeta_f, \quad (19)$$

where V represents W and Z , and $I_f^3 = 1/2$ ($-1/2$) for $f = u$ (d, e). For the loop induced couplings $\phi\gamma\gamma$, $\phi Z\gamma$ and ϕgg , we define $\kappa_{XY}^\phi \equiv \sqrt{\Gamma(\phi \rightarrow XY) / \Gamma(\phi \rightarrow XY)_{\text{SM}}}$ with $\Gamma(\phi \rightarrow XY)$ being the decay rate of $\phi \rightarrow XY$ and $XY = \gamma\gamma, Z\gamma$ and gg . For the charged Higgs bosons H^\pm , their Yukawa couplings are expressed as

$$\mathcal{L}_Y^{H^\pm} = \frac{\sqrt{2}}{v} [\bar{u}(m_u V_{ud} \zeta_u P_L - V_{ud} m_d \zeta_d P_R) d H^+ - \zeta_e \bar{v} m_e P_R e H^+ + \text{h.c.}], \quad (20)$$

where P_L (P_R) is the projection operator for left- (right-) handed fermions and V_{ud} is the Cabibbo-Kobayashi-Maskawa (CKM) matrix element. Here, we also give the scalar trilinear couplings $\lambda_{\phi\phi'\phi''}$ defined by the coefficient of the corresponding Lagrangian term, which are relevant to the decay rates discussed in Sec. 3:

$$\lambda_{H^+H^-h} = \frac{1}{v} \left[(2M^2 - 2m_{H^\pm}^2 - m_h^2)s_{\beta-\alpha} + 2(M^2 - m_h^2) \cot 2\beta c_{\beta-\alpha} \right], \quad (21)$$

$$\lambda_{H^+H-H} = -\frac{1}{v} \left[2(M^2 - m_H^2) \cot 2\beta s_{\beta-\alpha} + (2m_{H^\pm}^2 + m_H^2 - 2M^2)c_{\beta-\alpha} \right], \quad (22)$$

$$\lambda_{H^+H-A} = 0, \quad (23)$$

$$\lambda_{Hhh} = -\frac{c_{\beta-\alpha}}{2v} \left\{ 4M^2 - 2m_h^2 - m_H^2 + (2m_h^2 + m_H^2 - 3M^2)[2c_{\beta-\alpha}^2 + s_{\beta-\alpha}c_{\beta-\alpha}(\tan \beta - \cot \beta)] \right\}, \quad (24)$$

where Eq. (23) is followed from the CP-invariance.

Let us discuss the important limits of the parameters in the THDM, the decoupling limit and the alignment limit. First, the decoupling limit is realized by taking $M \rightarrow \infty$, by which all the masses of the additional Higgs bosons become infinity, and only h remains at the EW scale.¹ In this limit, new physics effects on low energy observables disappear due to the decoupling theorem [99,103]. Second, on the other hand, the alignment limit can be defined by taking $s_{\beta-\alpha} \rightarrow 1$, in which the h_1^h state in Φ coincides with the mass eigenstate h , and $\kappa_V^h = \kappa_f^h = 1$ is satisfied at tree level. We note that this limit is automatically realized in the decoupling limit. Here, the important thing is that if $\kappa_V^h \neq 1$ and/or $\kappa_f^h \neq 1$ are found at future collider experiments, we cannot take the decoupling limit. This provides us a *new no-loose theorem* [28,87,95], where we can extract the upper bound on the mass scale of the second Higgs boson.² Quantitatively, such a bound is given by imposing the constraints from perturbative unitarity and vacuum stability as we will discuss them below. Notice here that the inverse of the above statement does not hold in general, namely, *alignment without decoupling* can be considered. Such scenario is well motivated by; e.g., the successful EW baryogenesis [62–69].

As mentioned above, we take into account the perturbative unitarity and the vacuum stability bounds. For the unitarity bound, we impose $|a_i| \leq 1/2$, where a_i are independent eigenvalues of the s -wave amplitude matrix for two-body to two-body scattering processes in the high-energy limit [94,105–107]. The analytic expressions for a_i are given in Appendix A. In this limit, due to the equivalence theorem [108], only the contact scalar interaction terms contribute to the s -wave amplitude, which can be written in terms of the scalar quartic couplings. Thus, the unitarity bound gives constraints on the masses of additional Higgs bosons and the mixing angle through the relations given in Eqs. (5)–(12), see also Eqs. (A.8)–(A.11). On the other hand, the vacuum stability is the requirement that the Higgs potential is bounded from below in any direction with large field values. The sufficient and necessary conditions are given in Refs. [109–112]. We give a comment on the true vacuum condition. The Higgs potential can have several extrema besides the EW true vacuum. In such a case, we need to ensure that the true vacuum is the deepest vacuum than all the other ones. In Ref. [113], it has been shown that most of the parameter regions with $M^2 < 0$ are excluded by the true vacuum condition. Thus, throughout the paper we simply assume M^2 to be a positive value in order to satisfy the true vacuum condition.

Before closing this section, we briefly mention constraints from various flavor observables which particularly sensitive to the mass of the charged Higgs bosons. The comprehensive studies of these constraints in the Z_2 symmetric THDMs have been carried out in Refs. [88,114]. In Type-II, the $B \rightarrow X_s \gamma$ process gives the lower bound of $m_{H^\pm} \gtrsim 800$ GeV at 95% confidence

¹ From Eq. (12), $\tan 2(\beta - \alpha)$ goes to zero at $M \rightarrow \infty$ which corresponds to $\beta - \alpha \rightarrow \pi/2$ in our convention. In this case, m_H^2 and m_h^2 are determined only by M_{22}^2 and M_{11}^2 , respectively.

² An original no-loose theorem was discussed for the SM in Ref. [104].

level (CL) almost independently of the value of $\tan \beta$ for $\tan \beta \gtrsim 2$ [115,116]. On the other hand in Type-I, the severe constraint on m_{H^\pm} is given particularly for smaller $\tan \beta$; e.g., $m_{H^\pm} \gtrsim 450$ GeV for $\tan \beta = 1$ [116]. However, above $\tan \beta \simeq 2$, the bound becomes weaker than the lower bound from the direct search at LEP; i.e., $m_{H^\pm} \gtrsim 80$ GeV [76]. Because the lepton Yukawa couplings are irrelevant to the $B \rightarrow X_s \gamma$ process, similar bounds given in Type-I and Type-II can be obtained in Type-X and Type-Y, respectively. In Type-II, $B \rightarrow \tau \nu$ and $B_s \rightarrow \mu \bar{\mu}$ processes give an upper limit on $\tan \beta$; e.g., $\tan \beta \gtrsim 20$ for $m_{H^\pm} = 800$ GeV [88]. In Type-X, constraint by $\tau \rightarrow \mu \nu \bar{\nu}$ becomes important for large $\tan \beta$ [102,117,118]. In the small $\tan \beta$ region, the neutral meson mixing processes $B^0 - \bar{B}^0$ give a stronger bounds for m_{H^\pm} compared to the bound from $B \rightarrow X_s \gamma$, and these exclude the wide region in all the types of THDMs.

3. Decays of the Higgs bosons

In this section, we give the analytic expressions for the decay rates of the Higgs bosons including higher-order corrections in QCD. In addition, some numerical results for the decays of the Higgs bosons are shown.

3.1. Running parameters

We give the expressions for the running strong coupling $\alpha_s(\mu)$ and the running quark masses $\bar{m}_q(\mu)$ at the scale μ in the $\overline{\text{MS}}$ scheme. In order to compute these variables, we need the coefficients of the β function for $\alpha_s(\mu)$ and those of the anomalous dimension for $\bar{m}_q(\mu)$. Their formulae at the three-loop level are given by [119,120]

$$\beta_0 = 11 - \frac{2}{3}N_f, \quad \beta_1 = 51 - \frac{19}{3}N_f, \quad \beta_2 = 2857 - \frac{5033}{9}N_f + \frac{325}{27}N_f^2, \quad (25)$$

$$\gamma_0 = 4, \quad \gamma_1 = \frac{101}{3} - \frac{10}{9}N_f, \quad \gamma_2 = 2498 - \left[\frac{4432}{27} + \frac{320}{3}\zeta(3) \right] N_f - \frac{280}{81}N_f^2, \quad (26)$$

with N_f being the number of active flavors and with $\zeta(n)$ indicating the Riemann zeta function. The running strong coupling α_s at the scale μ is expressed as

$$\alpha_s(\mu) = \frac{4\pi}{\beta_0 \ell_\mu} \left\{ 1 - \frac{2\beta_1}{\beta_0^2} \frac{\ln \ell_\mu}{\ell_\mu} + \frac{4\beta_1^2}{\beta_0^4 \ell_\mu^2} \left[\left(\ln \ell_\mu - \frac{1}{2} \right)^2 + \frac{\beta_2 \beta_0}{8\beta_1^2} - \frac{5}{4} \right] \right\}, \quad (27)$$

where $\ell_\mu = \ln(\mu^2/\Lambda_{\text{QCD}}^2)$, and Λ_{QCD} is the asymptotic scale parameter [121]. The running quark mass at the scale of the pole mass m_q is given by [122–125]

$$\begin{aligned} \bar{m}_q(m_q) = m_q \left[1 - \frac{4}{3} \frac{\alpha_s(m_q)}{\pi} + (1.0414N_f - 14.3323) \frac{\alpha_s^2(m_q)}{\pi^2} \right. \\ \left. + (-0.65269N_f^2 + 26.9239N_f - 198.7068) \frac{\alpha_s^3(m_q)}{\pi^3} \right]. \end{aligned} \quad (28)$$

The running quark mass at the scale μ is expressed as

$$\bar{m}_q(\mu) = \bar{m}_q(m_q) \times \frac{c[\alpha_s(\mu)/\pi]}{c[\alpha_s(m_q)/\pi]}, \quad (29)$$

where the function $c(x)$ is given by [126,127]

$$c(x) = x^{\bar{\gamma}_0} \left\{ 1 + (\bar{\gamma}_1 - \bar{\beta}_1 \bar{\gamma}_0)x + \frac{1}{2}[(\bar{\gamma}_1 - \bar{\beta}_1 \bar{\gamma}_0)^2 + \bar{\gamma}_2 + \bar{\beta}_1^2 \bar{\gamma}_0 - \bar{\beta}_1 \bar{\gamma}_1 - \bar{\beta}_2 \bar{\gamma}_0]x^2 \right\}, \quad (30)$$

with $\bar{\beta}_i = \beta_i / \beta_0$ and $\bar{\gamma}_i = \gamma_i / \beta_0$.

If the renormalization group (RG) evolution crosses the flavor threshold, we need to take into account the matching condition of the running strong coupling [128] and the running quark mass [129,130]

$$\alpha_s^{(N_f-1)}(\mu) = \zeta_g^2 \alpha_s^{(N_f)}(\mu), \quad (31)$$

$$\bar{m}_q^{(N_f-1)}(\mu) = \zeta_m \bar{m}_q^{(N_f)}(\mu), \quad (32)$$

where ζ_g and ζ_m are the matching coefficients. We note that the matching coefficients are unity up to NLO, and we use $\zeta_g = \zeta_m = 1$ in the following. For example, the running charm quark mass at m_h can be evaluated as

$$\bar{m}_c(m_h) = \frac{c^{(5)}[\alpha_s(m_h)/\pi]}{c^{(5)}[\alpha_s(m_b)/\pi]} \times \frac{c^{(4)}[\alpha_s(m_b)/\pi]}{c^{(4)}[\alpha_s(m_c)/\pi]} \times \bar{m}_c(m_c). \quad (33)$$

3.2. QCD corrections to the neutral Higgs decays

In the following, we describe how to include QCD corrections for processes of the neutral Higgs bosons $\phi (= h, H, A)$ in our calculations. For the decay rates of h , we adopt the formulae of incorporating those QCD corrections in H-COUP v2 [56].³

The decay rate into a pair of light quarks ($q \neq t$) including next-to-next-to-leading order (NNLO) QCD corrections in the $\overline{\text{MS}}$ scheme is given by [120,131–134]

$$\Gamma(\phi \rightarrow q\bar{q}) = \Gamma_0(\phi \rightarrow q\bar{q})(1 + \Delta_\phi^\phi), \quad (34)$$

where

$$\Delta_\phi^\phi = \frac{\alpha_s(\mu)}{\pi} C_F \left(\frac{17}{4} + \frac{3}{2} \ln \frac{\mu^2}{m_\phi^2} \right) + \left(\frac{\alpha_s(\mu)}{\pi} \right)^2 (35.94 - 1.36N_f) + \Delta_{t\text{-loop}}^\phi, \quad (35)$$

with the color factor $C_F = 4/3$. The last term $\Delta_{t\text{-loop}}^\phi$ indicates top-quark loop contributions, which calculated in the case with $m_t \gg m_\phi$ and $\mu = m_\phi$ as

$$\Delta_{t\text{-loop}}^H = \frac{\kappa_t^H}{\kappa_q^H} \left(\frac{\alpha_s(\mu)}{\pi} \right)^2 \left(1.57 - \frac{2}{3} \ln \frac{m_H^2}{m_t^2} + \frac{1}{9} \ln^2 \frac{\bar{m}_q^2(\mu)}{m_H^2} \right), \quad (36)$$

$$\Delta_{t\text{-loop}}^A = \frac{\kappa_t^A}{\kappa_q^A} \left(\frac{\alpha_s(\mu)}{\pi} \right)^2 \left(3.83 - \ln \frac{m_A^2}{m_t^2} + \frac{1}{6} \ln^2 \frac{\bar{m}_q^2(\mu)}{m_A^2} \right). \quad (37)$$

In the LO decay rate Γ_0 , mass parameters arising from Yukawa couplings are replaced by the running masses $\bar{m}_q(\mu)$. Thereby, large logarithmic corrections induced by the light quark masses are resummed [135].

For the top pair, the QCD correction factor Δ_t^ϕ depends on the CP property of the Higgs boson. We obtain the decay rate at the NLO in the on-shell scheme as

³ HCOUP v2 evaluates the decay rates for the 125 GeV Higgs boson with QCD and EW corrections, whereas the decay rates for heavy Higgs bosons are not incorporated.

$$\Gamma(\phi \rightarrow t\bar{t}) = \Gamma_0(\phi \rightarrow t\bar{t})(1 + \Delta_t^\phi), \quad (38)$$

where [61,136]

$$\Delta_t^H = \frac{\alpha_s(\mu)}{\pi} C_F \left[\frac{L(\beta_t)}{\beta_t} - \frac{1}{16\beta_t^3} (3 + 34\beta_t^2 - 13\beta_t^4) \ln \rho_t + \frac{3}{8\beta_t^2} (7\beta_t^2 - 1) \right], \quad (39)$$

$$\Delta_t^A = \frac{\alpha_s(\mu)}{\pi} C_F \left[\frac{L(\beta_t)}{\beta_t} - \frac{1}{16\beta_t^3} (19 + 2\beta_t^2 + 3\beta_t^4) \ln \rho_t + \frac{3}{8} (7 - \beta_t^2) \right], \quad (40)$$

with $\beta_t = \lambda^{1/2}(m_t^2/m_\phi^2, m_t^2/m_\phi^2)$ and $\rho_t = (1 - \beta_t)/(1 + \beta_t)$, where the function λ is defined in Appendix B. The function $L(\beta_t)$ is given by

$$L(\beta_t) = (1 + \beta_t^2) \left[4\text{Li}_2(\rho_t) + 2\text{Li}_2(-\rho_t) + 3 \ln \rho_t \ln \frac{2}{1 + \beta_t} + 2 \ln \rho_t \ln \beta_t \right] - 3\beta_t \ln \frac{4}{1 - \beta_t^2} - 4\beta_t \ln \beta_t, \quad (41)$$

where Li_2 is the dilog function. In the chiral limit $\beta_t \rightarrow 1$, we obtain

$$\Delta_t^\phi = \frac{\alpha_s(\mu)}{\pi} C_F \left(\frac{9}{4} + \frac{3}{2} \ln \frac{m_t^2}{m_\phi^2} \right). \quad (42)$$

Contributions of the top quark mass in the NLO QCD corrections are significant near the threshold region. On the other hands, dominant contributions in $m_\phi \gg m_t$ can be the logarithmic contribution, $\ln(m_t^2/m_\phi^2)$, which appears in the QCD corrections in the $\overline{\text{MS}}$ scheme. In order to take into account both of the effects, we use interpolation for the corrections to $\phi \rightarrow t\bar{t}$ as discussed in Ref. [137].

For the decays into an off-shell gauge boson $\phi \rightarrow VV^*$ and $\phi \rightarrow \phi V^*$ ($V = W, Z$), the QCD correction can enter in the $V^* \rightarrow q\bar{q}$ part. This effect can be included by [138]

$$\Gamma(\phi \rightarrow VV^* \rightarrow Vq\bar{q}) = \Gamma_0(\phi \rightarrow VV^* \rightarrow Vq\bar{q})(1 + \Delta_{\text{QCD}}), \quad (43)$$

$$\Gamma(\phi \rightarrow \phi'V^* \rightarrow \phi'q\bar{q}) = \Gamma_0(\phi \rightarrow \phi'V^* \rightarrow \phi'q\bar{q})(1 + \Delta_{\text{QCD}}), \quad (44)$$

where

$$\Delta_{\text{QCD}} = C_F \frac{3\alpha_s(\mu)}{4\pi}. \quad (45)$$

The fermion loop contribution to the decay rate of $\phi \rightarrow \gamma\gamma$ receives QCD corrections. At the NLO, the QCD correction can be implemented by the following replacement of the quark loop function $I_F^\phi(\tau_q)$ in the $\overline{\text{MS}}$ scheme [27,139]

$$I_F^\phi(\tau_q) \rightarrow I_F^\phi(\tau_q) \left[1 + \frac{\alpha_s(\mu)}{\pi} C_\phi \right], \quad (46)$$

where $I_F^\phi(\tau_q)$ is defined in Appendix B, and the factor C_ϕ is determined by the scale μ and the mass ratio $\tau_q \equiv m_\phi^2/(4m_q^2)$. In our computation, we adopt the analytic expression of C_ϕ given in Ref. [140], in which C_ϕ is written in terms of the polylog functions, up to the Li_4 function. It has been known that the factor C_ϕ becomes the simple form in the large top mass limit, $\tau_t \rightarrow 0$, as [27,139,141]

$$C_H = -1, \quad C_A = 0. \quad (47)$$

On the other hand, in the large Higgs mass limit or equivalently the massless fermion limit, the factor C_ϕ is common to the case for the CP-even and CP-odd Higgs boson [27]:

$$\text{Re}I_F^\phi C_\phi = -\frac{1}{18} \left[\ln^2(4\tau_q) - \pi^2 - \frac{2}{3} \ln(4\tau_q) + 2 \ln \frac{\mu^2}{m_q^2} \right], \quad \text{Im}I_F^\phi C_\phi = \frac{\pi}{3} \left[\frac{1}{3} \ln(4\tau_q) + 2 \right]. \quad (48)$$

For $H/A \rightarrow Z\gamma$ decays, we calculate them at the LO.

For the $\phi \rightarrow gg$ decays, we take into account the decay rate corrected up to NNLO expressed as,

$$\Gamma(\phi \rightarrow gg) = \Gamma_0(\phi \rightarrow gg) \left[1 + \frac{\alpha_s(\mu)}{\pi} E_\phi^{(1)} + \left(\frac{\alpha_s(\mu)}{\pi} \right)^2 E_\phi^{(2)} \right]. \quad (49)$$

For the NLO QCD corrections to the $\phi \rightarrow gg$ decays, there are contributions from virtual gluon loops and those from real emissions of a gluon ($\phi \rightarrow ggg$) and a gluon splitting into quark pair ($\phi \rightarrow gq\bar{q}$). $E_\phi^{(1)}$ in Eq. (49) can be decomposed as [27],

$$E_\phi^{(1)} = E_\phi^{\text{virt}}(m_t \rightarrow \infty) + E_\phi^{\text{real}}(m_t \rightarrow \infty) + \Delta E_\phi. \quad (50)$$

The first and second terms respectively denote the contribution from virtual gluon loops and that from real gluon emissions in the large top-quark mass limit. These are expressed by

$$E_H^{\text{virt}}(m_t \rightarrow \infty) = \frac{11}{2} + \frac{33 - 2N_f}{6} \ln \frac{\mu^2}{m_H^2}, \quad (51)$$

$$E_A^{\text{virt}}(m_t \rightarrow \infty) = 6 + \frac{33 - 2N_f}{6} \ln \frac{\mu^2}{m_A^2}, \quad (52)$$

$$E_H^{\text{real}}(m_t \rightarrow \infty) = E_A^{\text{real}}(m_t \rightarrow \infty) = \frac{73}{4} - \frac{7}{6} N_f. \quad (53)$$

The last term ΔE_ϕ vanishes in the large top-quark mass limit, which can be decomposed into the following three parts:

$$\Delta E_\phi = \Delta E_\phi^{\text{virt}} + \Delta E_\phi^{\text{ggg}} + N_f \Delta E_\phi^{\text{gq}\bar{q}}. \quad (54)$$

Similar to the $\phi \rightarrow \gamma\gamma$ decays, we adopt the analytic expression for the virtual correction $\Delta E_\phi^{\text{virt}}$ given in Ref. [140]. Those for the real emissions $\Delta E_\phi^{\text{ggg}}$ and $\Delta E_\phi^{\text{gq}\bar{q}}$ are given in Ref. [27], which are expressed in the form with a double integral with respect to phase space variables. According to Ref. [27], the factor ΔE_ϕ is dominantly determined by the contribution from the virtual gluon loop $\Delta E_\phi^{\text{virt}}$, so that in our computation we neglect the contributions from $\Delta E_\phi^{\text{ggg}}$ and $\Delta E_\phi^{\text{gq}\bar{q}}$. From Eq. (53), E_ϕ is given to be about 18 at $\mu = m_\phi$ and $N_f = 5$, and it gives sizable correction to the decay rate; e.g., $\sim 70\%$ for $m_\phi = 100$ GeV. For NNLO contributions; i.e., $E_\phi^{(2)}$, we incorporate those in the limit with $m_t \gg m_\phi$ and setting as $\mu = m_\phi$, which are expressed as [142,143]

$$E_H^{(2)} = \frac{149533}{288} - \frac{363}{8} \zeta(2) - \frac{495}{8} \zeta(3) - \frac{19}{8} \ln \frac{m_t^2}{m_H^2}$$

$$+ N_f \left(-\frac{4157}{72} + \frac{11}{2}\zeta(2) + \frac{5}{4}\zeta(3) - \frac{2}{3}\ln\frac{m_t^2}{m_H^2} \right) + N_f^2 \left(\frac{127}{108} - \frac{1}{6}\zeta(2) \right), \quad (55)$$

$$E_A^{(2)} = \frac{51959}{96} - \frac{363}{8}\zeta(2) - \frac{495}{8}\zeta(3) + N_f \left(-\frac{473}{8} + \frac{11}{2}\zeta(2) + \frac{5}{4}\zeta(3) - \ln\frac{m_t^2}{m_A^2} \right) + N_f^2 \left(\frac{251}{216} - \frac{\zeta(2)}{6} \right). \quad (56)$$

3.3. QCD corrections to the charged Higgs decays

The QCD corrections to charged Higgs decays into light quarks are presented in the $\overline{\text{MS}}$ scheme. The expression can be written in the same way with the neutral Higgs boson decays as

$$\Gamma(H^\pm \rightarrow qq') = \Gamma_0(H^\pm \rightarrow qq')(1 + \Delta_q^{H^\pm}), \quad (57)$$

where the $\Delta_q^{H^\pm}$ is given by Eq. (35) but without the last term $\Delta_{t\text{-loop}}^\phi$. For the decays into quarks including the top quark, we apply the QCD correction in the on-shell scheme. It is given in [61, 144]

$$\Gamma(H^\pm \rightarrow qq') = \frac{3G_F m_{H^\pm}}{4\sqrt{2}\pi} |V_{qq'}|^2 \lambda_{qq'}^{1/2} \left[(1 - \mu_q - \mu_{q'}) \left\{ m_q^2 \zeta_q^2 \left(1 + C_F \frac{\alpha_s(\mu)}{\pi} \Delta_{qq'}^+ \right) + m_{q'}^2 \zeta_{q'}^2 \left(1 + C_F \frac{\alpha_s(\mu)}{\pi} \Delta_{qq'}^- \right) \right\} - 4\sqrt{\mu_q \mu_{q'}} m_q m_{q'} \zeta_q \zeta_{q'} \right], \quad (58)$$

where $\mu_q = m_q^2/m_{H^\pm}^2$, $\lambda_{qq'} = (1 - \mu_q - \mu_{q'})^2 - 2\mu_q \mu_{q'}$. The QCD corrections $\Delta_{qq'}^+$ and $\Delta_{qq'}^-$ are expressed by

$$\Delta_{qq'}^+ = \frac{9}{4} + \frac{3 - 2\mu_q + 2\mu_{q'}}{4} \ln \frac{\mu_q}{\mu_{q'}} + \frac{(\frac{3}{2} - \mu_q - \mu_{q'})\lambda_{qq'} + 5\mu_q \mu_{q'}}{2\lambda_{qq'}^{1/2}(1 - \mu_q - \mu_{q'})} \ln x_q x_{q'} + B_{qq'}, \quad (59)$$

$$\Delta_{qq'}^- = 3 + \frac{\mu_{q'} - \mu_q}{2} \ln \frac{\mu_q}{\mu_{q'}} + \frac{\lambda_{qq'} + 2(1 - \mu_q - \mu_{q'})}{2\lambda_{qq'}^{1/2}} \ln x_q x_{q'} + B_{qq'}, \quad (60)$$

where $x_q = 2\mu_q/(1 - \mu_q - \mu_{q'} + \lambda_{qq'}^{1/2})$. A function $B_{qq'}$ is given in Ref. [61]. In these expressions quark pole masses are used. Similar to $\phi \rightarrow t\bar{t}$, we incorporate the corrections with interpolation to consider the effect of the top quark mass and the logarithmic corrections due to light down-type quark masses.

For the off-shell decays into a neutral Higgs boson and a W boson, $H^\pm \rightarrow \phi W^*$, the QCD correction can be applied as similar to $\phi \rightarrow \phi' V^*$. It can be written as

$$\Gamma(H^\pm \rightarrow \phi W^{\pm*} \rightarrow \phi qq') = \Gamma_0(H^\pm \rightarrow \phi W^{\pm*} \rightarrow \phi qq')(1 + \Delta_{\text{QCD}}), \quad (61)$$

where the QCD correction factor is given in Eq. (45). For loop induced decay processes of the charged Higgs bosons, $H^\pm \rightarrow W^\pm V$ ($V = Z, \gamma$), which have been studied in Refs. [145–150], we calculate them at the LO.

3.4. Total decay widths and decay branching ratios

We here discuss total widths and branching ratios for the neutral Higgs bosons and the charged Higgs bosons in four types of the THDMs in order for later discussion about direct searches of heavy Higgs bosons. We describe the behavior of the total widths and the branching ratios in cases with the alignment limit, $s_{\beta-\alpha} = 1$ and without taking the alignment limit, $s_{\beta-\alpha} = 0.995$. In the numerical computations, we use the beta version of H-COUP v3 [151], where the QCD corrections for the heavy Higgs bosons presented in previous subsections are included. In the QCD correction functions C_ϕ and E_ϕ^{virt} , polylog functions appear. We use CHAPLIN [152] for the numerical evaluation of such polylog functions. We have confirmed that our numerical results for the total widths and the branching ratios are consistent with 2HDMC [153].

We here show the case that masses of the additional Higgs bosons as well as M are degenerate; i.e., $m_\Phi \equiv m_H = m_A = m_{H^\pm}$ and $M = m_\phi$. While the m_ϕ is set to be $m_\phi = 200$ GeV or 800 GeV, $\tan\beta$ is scanned in the following range, $0.5 < \tan\beta < 50$. We note that, without depending on $\tan\beta$, results with $m_\phi = 200$ GeV for Type-II and Type-X are already excluded by the constraint from the flavor physics (also, for Type-I and Type-Y in lower $\tan\beta$ regions, $\tan\beta \lesssim 2$) [115,116]. Nevertheless, we show them in order to compare results among four types of the THDM. For the SM parameters, we use the following values of the $\overline{\text{MS}}$ quark masses for the bottom and charm quarks [154] and that for the top quark [155] at a scale of each pole mass;

$$\overline{m}_b(m_b) = 4.18 \text{ GeV}, \quad \overline{m}_c(m_c) = 1.28 \text{ GeV}, \quad \overline{m}_t(m_t) = 162.3 \text{ GeV}. \quad (62)$$

For the mass of the strange quark we use the running mass at $\mu = 2$ GeV [156], $\overline{m}_s(2 \text{ GeV}) = 0.097$ GeV. Running quark masses at an arbitrary scale are derived by Eq. (29). In the derivation, the running strong coupling is evaluated with the following values of $\Lambda_{\text{QCD}}^{N_f}$ [157],

$$\Lambda_{\text{QCD}}^6 = 89 \text{ MeV}, \quad \Lambda_{\text{QCD}}^5 = 210 \text{ MeV}, \quad \Lambda_{\text{QCD}}^4 = 292 \text{ MeV}, \quad \Lambda_{\text{QCD}}^3 = 332 \text{ MeV}, \quad (63)$$

for $N_f = 6, 5, 4$, and 3, respectively. The input value of the CKM matrix elements and the total width for the weak gauge bosons as well as the top quark are taken as [154],

$$V_{tb} = 0.999172, \quad V_{ts} = 0.3978, \quad V_{cb} = 0.04053, \quad (64)$$

$$\Gamma_W = 2.085 \text{ GeV}, \quad \Gamma_Z = 2.4952 \text{ GeV}, \quad \Gamma_t = 1.42 \text{ GeV}. \quad (65)$$

The former is relevant for the charged Higgs decays into quarks, $H^\pm \rightarrow tb$, $H^\pm \rightarrow ts$ and $H^\pm \rightarrow cb$. The latter is used in computation of the Higgs boson decays into off-shell particles.

Before we show numerical behaviors of the total widths and the branching ratios, we mention the loop induced decays of the charged Higgs bosons. The branching ratio of $H^\pm \rightarrow W^\pm Z$ can be enhanced when the mass difference between H^\pm and A is taken to some extent [146,150]. Whereas, in the following numerical results, where the additional Higgs bosons are degenerate, the branching ratio of $H^\pm \rightarrow W^\pm Z$ is at most $\mathcal{O}(10^{-4})$ in the present parameter choices. Furthermore, the branching ratio of $H^\pm \rightarrow W^\pm \gamma$ is smaller than that of $H^\pm \rightarrow W^\pm Z$.

The following numerical results for the total widths and the branching ratios are similar to those given in Ref. [87], where the systematic studies have been done. Nevertheless, we here show them because there are some developments from the previous study. Main difference from Ref. [87] is that we compute the decay processes including higher-order QCD corrections. Also, we incorporate the above mentioned decay processes for the charged Higgs bosons, $H^\pm \rightarrow W^\pm Z$ and $H^\pm \rightarrow W^\pm \gamma$, in the evaluation of the total width.

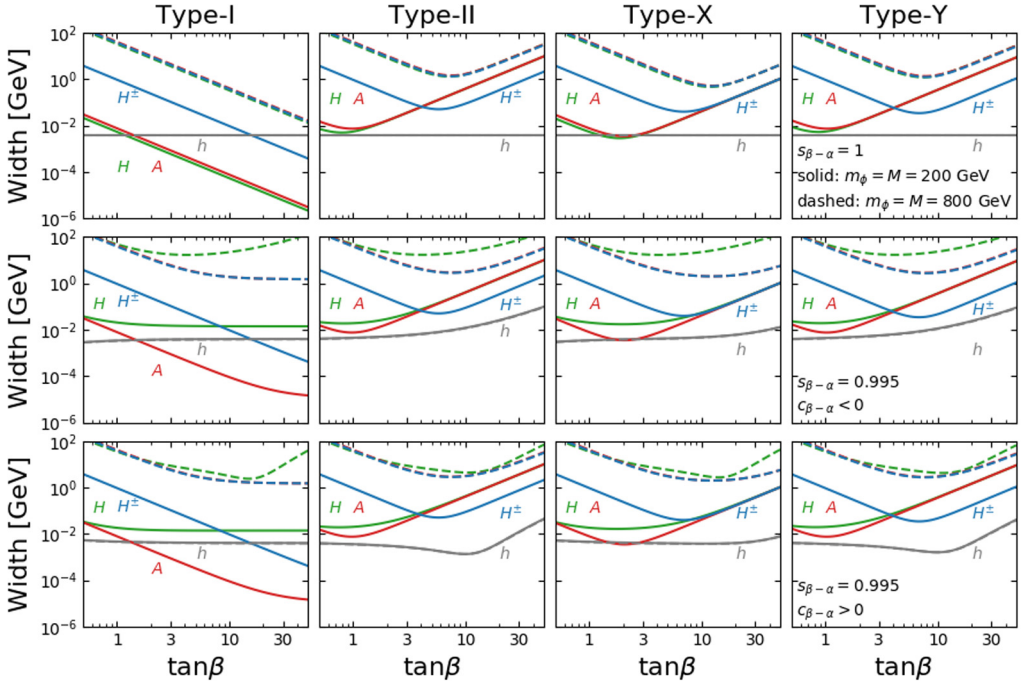


Fig. 1. Total widths of h , H , A and H^\pm as a function of $\tan\beta$ in Type-I, Type-II, Type-X and Type-Y of the THDM from the left panels to the right panels. Solid lines and dashed lines show results of $m_\Phi = M = 200$ GeV and $m_\Phi = M = 800$ GeV, respectively. In the top panels, $s_{\beta-\alpha}$ is set to be 1. In the middle and bottom panels, $s_{\beta-\alpha}$ is set to be 0.995 with $c_{\beta-\alpha} < 0$ and $c_{\beta-\alpha} > 0$, respectively.

In Fig. 1, we show the total decay widths for the neutral Higgs bosons and the charged Higgs bosons as a function of $\tan\beta$ in the cases of $m_\Phi = M = 200$ GeV and $m_\Phi = M = 800$ GeV. Different values of $s_{\beta-\alpha}$ are taken in each panel, namely $s_{\beta-\alpha} = 1$ in the top panels, $s_{\beta-\alpha} = 0.995$ with $c_{\beta-\alpha} < 0$ in the middle panels, and $s_{\beta-\alpha} = 0.995$ with $c_{\beta-\alpha} > 0$ in the bottom panels. For the h decays, in the alignment limit $s_{\beta-\alpha} = 1$, the couplings with fermions and weak gauge bosons coincide with those in the SM at tree level, so that the total decay width does not depend on $\tan\beta$. On the contrary, when $\tan\beta$ increases at $s_{\beta-\alpha} = 0.995$ with $c_{\beta-\alpha} < 0$, the total width also increases due to the effect of $\tan\beta$ enhancement on $h \rightarrow b\bar{b}$ ($h \rightarrow \tau\bar{\tau}$) in Type-II and Type-Y (Type-X). For the heavy Higgs bosons H , A and H^\pm , the total widths vary in the both cases of $s_{\beta-\alpha} = 1$ and $s_{\beta-\alpha} \neq 1$. While those in Type-I monotonically decrease except for H with a mass of 800 GeV, there appears the dip at a certain value of $\tan\beta$ for each additional Higgs boson in Type-II, X and Y.

In Fig. 2, we show $\tan\beta$ dependence of the decay branching ratios for the neutral Higgs bosons and the charged Higgs bosons in the alignment limit, $s_{\beta-\alpha} = 1$, with $m_\Phi = M = 200$ GeV. For the SM-like Higgs boson decays, there is no $\tan\beta$ dependence of all the decay modes, since all the scaling factors κ_X^h are unity when $s_{\beta-\alpha} = 1$. We note that, in addition, the squared scaling factors of the fermion couplings for H and A are common and simply expressed by ζ_f parameters; i.e., $|\kappa_f^H|^2 = |\kappa_f^A|^2 = \zeta_f^2$ at $s_{\beta-\alpha} = 1$. In the case with $m_\Phi = M = 200$ GeV, the decay mode into a pair of the top quarks does not open for the $H(A)$ decays. Hence, for $\tan\beta > 1$, the main decay mode of H is $H \rightarrow b\bar{b}$ except for Type-X, as similar to the SM-like Higgs boson decays. For

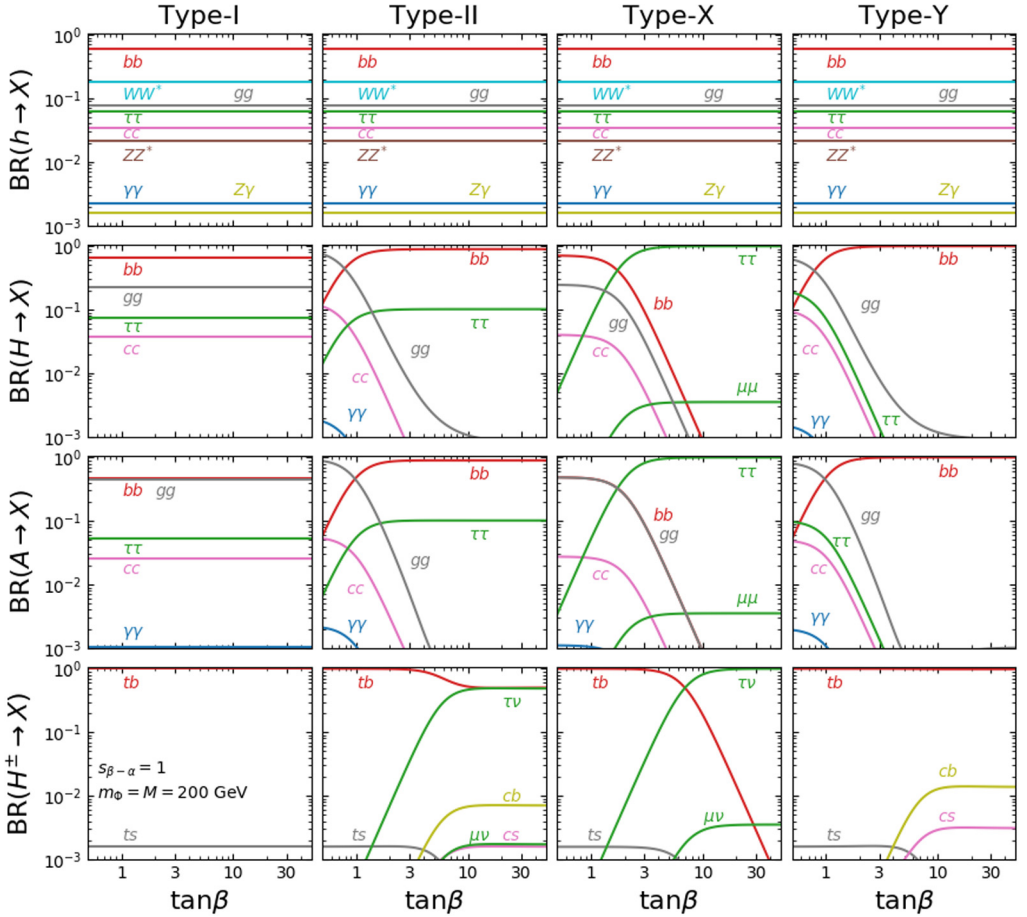


Fig. 2. Decay branching ratios for h , H , A and H^\pm as a function of $\tan\beta$ in the case of $m_\phi = M = 200$ GeV and $s_{\beta-\alpha} = 1$. Results for Type-I, Type-II, Type-X and Type-Y of the THDM are shown from the left panels to the right panels.

Type-X, the main decay mode is $H \rightarrow \tau\bar{\tau}$ due to the $\tan\beta$ enhancement for the leptonic decays, which also causes $H \rightarrow \mu\bar{\mu}$ with about 0.3% for $\tan\beta \gtrsim 4$.

For decays of A , one can see that the behavior of the branching ratios for decays into fermions is similar to those of H for all types of the THDM because of $|\kappa_f^H|^2 = |\kappa_f^A|^2$. The difference from H decays appears in the decay into gg . Namely, $\text{BR}(A \rightarrow gg)$ is relatively larger than $\text{BR}(H \rightarrow gg)$. This mainly comes from the fact that the NLO QCD correction is more significant than $H \rightarrow gg$, although the expressions at the LO are also different between H and A .

Apart from the neutral Higgs bosons, decays including a top quark exist for the charged Higgs bosons. While the decay into tb is the main decay mode for Type-I and Type-Y, the decay into $\tau\nu$ can be dominant in high $\tan\beta$ regions for Type-X. For Type-II both of the bottom Yukawa and the tau Yukawa coupling are enhanced by $\tan\beta$. As a consequence, the branching ratio $\text{BR}(H^\pm \rightarrow \tau\nu)$ approaches to $\text{BR}(H^\pm \rightarrow tb)$ in high $\tan\beta$ regions, in which effect of the top Yukawa coupling is negligible.

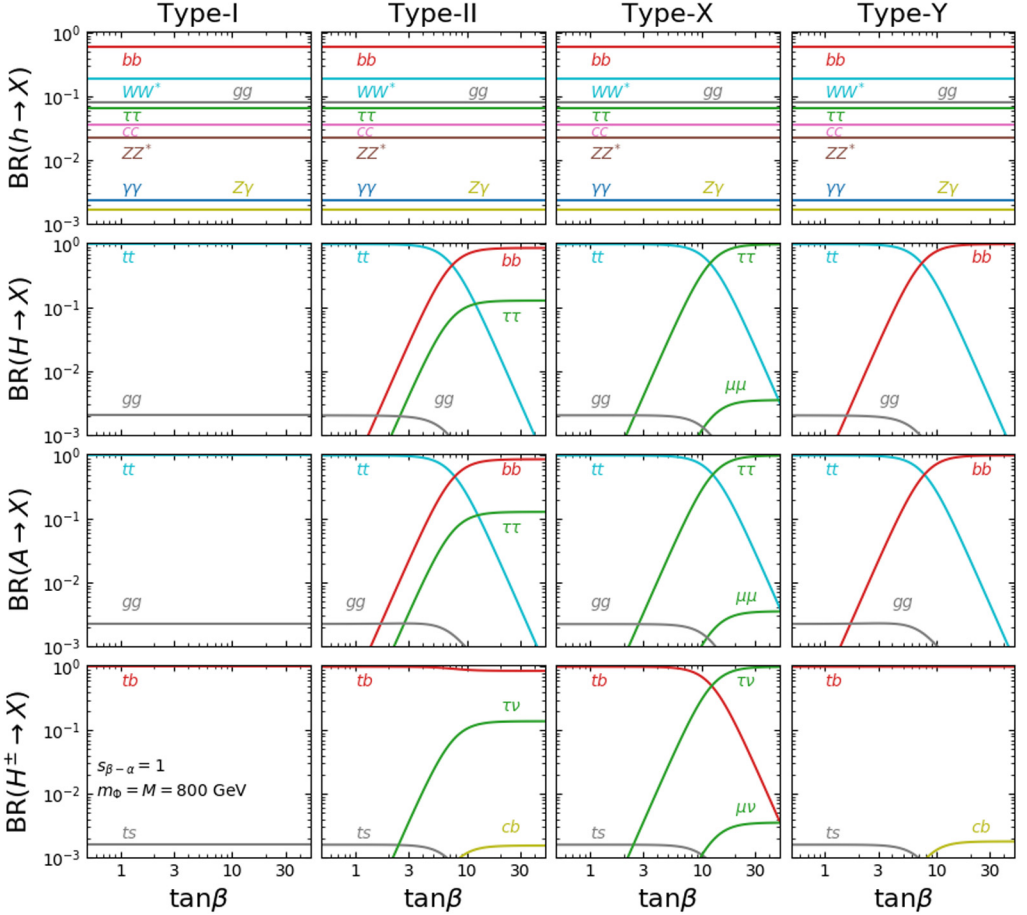


Fig. 3. Decay branching ratios for h , H , A and H^\pm as a function of $\tan\beta$ in the case of $m_\phi = M = 800$ GeV and $s_{\beta-\alpha} = 1$. Results for Type-I, Type-II, Type-X and Type-Y of the THDM are shown from the left panels to the right panels.

In Fig. 3, the branching ratios in the case of $s_{\beta-\alpha} = 1$ and $m_\phi = M = 800$ GeV are shown as a function of $\tan\beta$. For h decays, the behavior does not change much from the case with $m_\phi = M = 200$ GeV since the decay rates do not depend on the mass of the additional Higgs bosons at tree level. Main difference from Fig. 2 is appearance of the decays into $t\bar{t}$ in H and A . It dominates the branching ratios of H and A for Type-I with any value of $\tan\beta$. On the other hands, for Type-II, Type-X and Type-Y, $H \rightarrow t\bar{t}$ and $A \rightarrow t\bar{t}$ can be dominant only for $\tan\beta \lesssim 10$ since the decay rate is proportional to $\cot^2\beta$.

Next, we move on cases without taking the alignment limit, $s_{\beta-\alpha} \neq 1$. In these cases, the branching ratios of fermionic decay modes of H and h vary with a sign of $c_{\beta-\alpha}$. Furthermore, for decays of heavy Higgs bosons, additional decay modes, such as $H \rightarrow VV$ ($V = W, Z$) $H \rightarrow hh$, $A \rightarrow Zh$ and $H^\pm \rightarrow W^\pm h$, shall appear. Therefore, their decay patterns can drastically change from the case of the alignment limit.

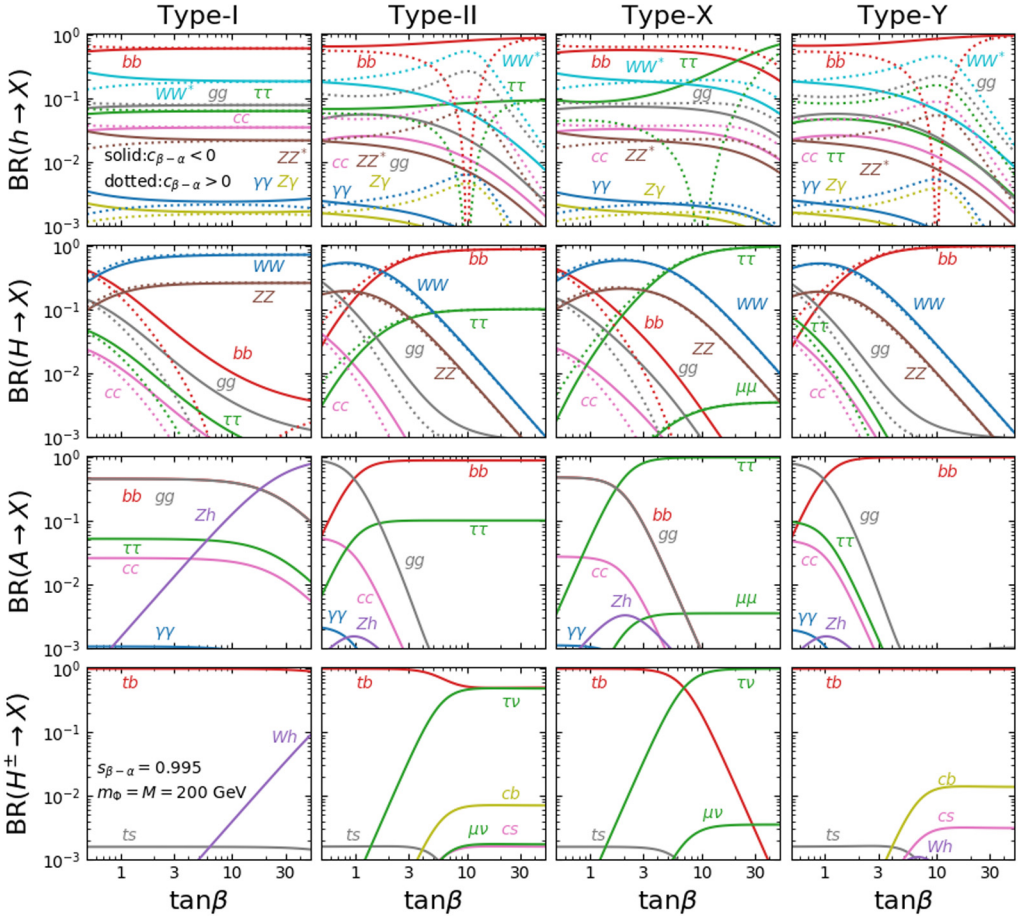


Fig. 4. Decay branching ratios for h , H , A and H^\pm as a function of $\tan\beta$ in the case of $m_\Phi = M = 200$ GeV and $s_{\beta-\alpha} = 0.995$. Solid lines show results of $c_{\beta-\alpha} < 0$ and dotted lines are those of $c_{\beta-\alpha} > 0$. Results for Type-I, Type-II, Type-X and Type-Y of the THDM are shown from the left panels to the right panels.

In Fig. 4, we show $\tan\beta$ dependence of the branching ratios for h , H , A and H^\pm in the case with $s_{\beta-\alpha} = 0.995$ and $m_\Phi = M = 200$ GeV. For decays of h and H , predictions in the cases with $c_{\beta-\alpha} < 0$ and $c_{\beta-\alpha} > 0$ are separately plotted by solid lines and dotted lines, respectively. Regarding the decay of h one can see clear $\tan\beta$ dependence for all the decay modes. In particular, the branching ratio for $h \rightarrow b\bar{b}$ remarkably increases by $\tan\beta$. For the CP-even Higgs boson H , the decays into the on-shell weak gauge bosons $H \rightarrow ZZ$ and $H \rightarrow W^+W^-$, which are proportional to m_H^3 as seen in Eq. (B.4) of Appendix B, can dominate. Whereas, the decay into $b\bar{b}$ ($\tau\bar{\tau}$) overcomes them for large $\tan\beta$ in Type-II and Type-Y (Type-X). Similarly, decays into a scalar boson and an off-shell vector boson $A \rightarrow hZ^*$ and $H^\pm \rightarrow hW^{\pm*}$ can be sizable in Type-I for large $\tan\beta$.

In Fig. 5, the branching ratios in the case with $s_{\beta-\alpha} = 0.995$ and $m_\Phi = M = 800$ GeV are also shown. While $H \rightarrow t\bar{t}$ and $A \rightarrow t\bar{t}$ can be the main decay mode as similar to Fig. 3, for decays of H , $H \rightarrow hh$ can be dominant due to the large scalar coupling λ_{Hhh} . Apart from this,

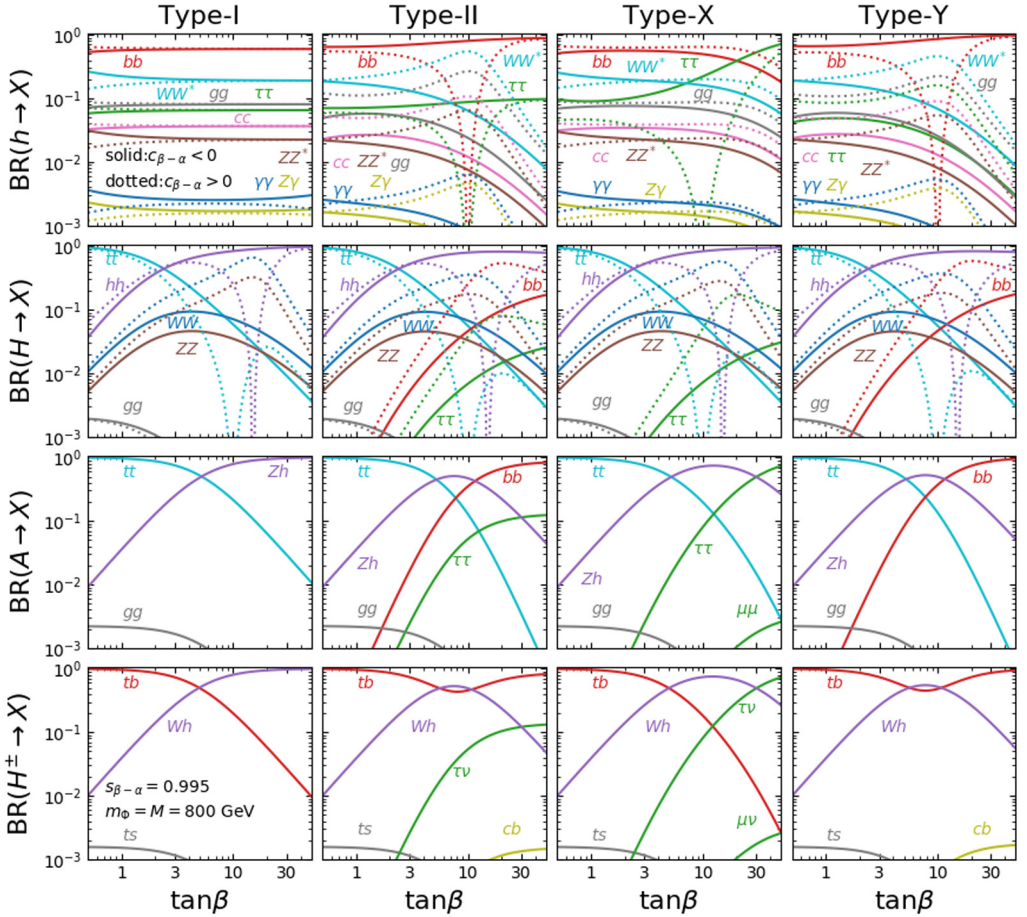


Fig. 5. Decay branching ratios for h , H , A and H^\pm as a function of $\tan\beta$ in the case of $m_\Phi = M = 800$ GeV and $s_{\beta-\alpha} = 0.995$. Solid lines show results of $c_{\beta-\alpha} < 0$ and dotted lines are those of $c_{\beta-\alpha} > 0$. Results for Type-I, Type-II, Type-X and Type-Y of the THDM are shown from the left panels to the right panels.

one can see that the branching ratio for $H \rightarrow t\bar{t}$ and $H \rightarrow hh$ are close to 0 at $\tan\beta \sim 10$ and $\tan\beta \sim 16$, respectively, when $c_{\beta-\alpha} > 0$. This is because the scaling factor κ_t^H and the scalar coupling λ_{Hhh} vanish at those values of $\tan\beta$. We note that the value of λ_{Hhh} depends on the value of M as we can see from Eq. (24). Therefore, the decay width for $H \rightarrow hh$ can change if we consider the non-degenerate case; i.e., $m_\Phi \neq M$.

The branching ratios including QCD corrections are discussed in the above paragraphs. On the other hands, there are a lots of studies on EW corrections to decays of the SM-like Higgs boson [29,32–40,43–46] and additional Higgs bosons [84,158–161]. NLO EW corrections to $h \rightarrow f\bar{f}$ can be evaluated by utilizing H-COUP v2 [56]. Also, in the program, those to $h \rightarrow VV^* \rightarrow Vf\bar{f}$ are calculated. NLO EW corrections to on-shell two-body decays of H , A and H^\pm will be implemented in H-COUP v3 [151]. In 2HDECAY [57], NLO corrections to on-shell two-body decays of h , H , A , and H^\pm are evaluated. In addition, NLO EW corrections to $h/H \rightarrow V^{(*)}V^{(*)} \rightarrow 4f$ are calculated in Prophecy4f [58].

Table 2

List of constraints used in this study from direct searches for heavy Higgs bosons at the 13 TeV LHC.

Constrained quantity	Applicable mass region	Reference
$\sigma(\phi) \times \text{BR}(\phi \rightarrow \tau\tau)$	$200 < m_\phi < 2000 \text{ GeV}$	Fig. 7(a) in [3]
$\sigma(\phi(bb)) \times \text{BR}(\phi \rightarrow \tau\tau)$	$200 < m_\phi < 2000 \text{ GeV}$	Fig. 7(b) in [3]
$\sigma(\phi(bb)) \times \text{BR}(\phi \rightarrow bb)$	$450 < m_\phi < 1400 \text{ GeV}$	Fig. 8 in [4]
$\sigma(\phi) \times \text{BR}(\phi \rightarrow tt)$	$400 < m_\phi < 5000 \text{ GeV}$	Fig. 14 in [5]
$\sigma(H) \times \text{BR}(H \rightarrow hh) \times \text{BR}(h \rightarrow bb)^2$	$260 < m_\phi < 2000 \text{ GeV}$	Fig. 9(a) in [6]
$\sigma(H) \times \text{BR}(H \rightarrow WW)$	$200 < m_\phi < 2000 \text{ GeV}$	Fig. 5 in [7]
$\sigma(H) \times \text{BR}(H \rightarrow ZZ)$	$200 < m_\phi < 2000 \text{ GeV}$	Fig. 6 in [8]
$\sigma(A) \times \text{BR}(A \rightarrow Zh) \times \text{BR}(h \rightarrow bb)$	$200 < m_\phi < 2000 \text{ GeV}$	Fig. 6(a) in [9]
$\sigma(A(bb)) \times \text{BR}(A \rightarrow Zh) \times \text{BR}(h \rightarrow bb)$	$200 < m_\phi < 2000 \text{ GeV}$	Fig. 6(b) in [9]
$\sigma(tH^\pm) \times \text{BR}(H^\pm \rightarrow t\bar{b})$	$200 < m_\phi < 2000 \text{ GeV}$	Fig. 8 in [10]
$\sigma(tH^\pm) \times \text{BR}(H^\pm \rightarrow \tau\nu)$	$200 < m_\phi < 2000 \text{ GeV}$	Fig. 8(a) in [11]

4. Direct searches at the LHC

In this section, we present current constraints on the parameter space in the THDMs from direct searches for heavy Higgs bosons with the LHC Run-II data.

Let us briefly summarize the procedure how we obtain the constraints on the parameters in the THDMs from model-independent analyses for heavy Higgs boson searches at the LHC. First, we compute production cross sections of heavy neutral Higgs bosons, $\phi = H$ and A , in the THDMs for the gluon-fusion process ($pp \rightarrow \phi$) and for the bottom-quark associated (or bottom-quark annihilate) process ($pp \rightarrow \phi(b\bar{b})$) at the NNLO in QCD by using `SUSHI-1.7.0` [162,163]. For the charged Higgs boson production $pp \rightarrow tH^\pm$, we use the values given at the NLO QCD by the Higgs cross section working group (HXSWG) [164], based on Refs. [165–168]. Second, we calculate decay branching ratios of the Higgs bosons in the THDMs, including higher-order QCD corrections, as described in Sec. 3. Finally, we compute the production cross sections times the branching ratios for each parameter point for each search channel at the LHC listed in Table 2, and compared with the upper limits at 95% CL with 36 fb^{-1} data to obtain the constraints. Here, as in Sec. 3, we assume the common heavy Higgs boson masses $m_H = m_A = m_{H^\pm} (\equiv m_\phi)$ and also $M = m_\phi$. Because we are interested in the near alignment scenario, we consider the value of $s_{\beta-\alpha}$ as 1, 0.995, 0.99 and 0.98 both for $c_{\beta-\alpha} < 0$ and $c_{\beta-\alpha} > 0$. We note that we use the expected upper limits, not the observed ones, from the LHC analyses in order for the HL-LHC projection. Although we use the ATLAS data, listed in Table 2, the similar limits have been reported by the CMS experiment [12–17]. We also note that, although new analyses with full Run-II data (139 fb^{-1}) are available for some channels; e.g., $\phi \rightarrow \tau\bar{\tau}$ [169], we use the upper limit with 36 fb^{-1} data for a fair comparison with the other channels. Similar phenomenological studies have been done earlier in; e.g., Refs. [170,171].

4.1. Production cross sections for the additional Higgs bosons

Before we discuss current constraints on the parameter space from direct searches, we present production rates for the heavy Higgs bosons at the 13 TeV LHC. Fig. 6 shows cross sections for the CP-even heavy Higgs boson H via the gluon fusion process (left two columns) and via the bottom-quark associated process (right two columns) on the m_ϕ – $\tan\beta$ plane. We only show the cases in the Type-I and Type-II THDMs since the lepton sector is irrelevant for the productions, namely the productions in Type-X and Type-Y are same as in Type-I and Type-II, respectively.

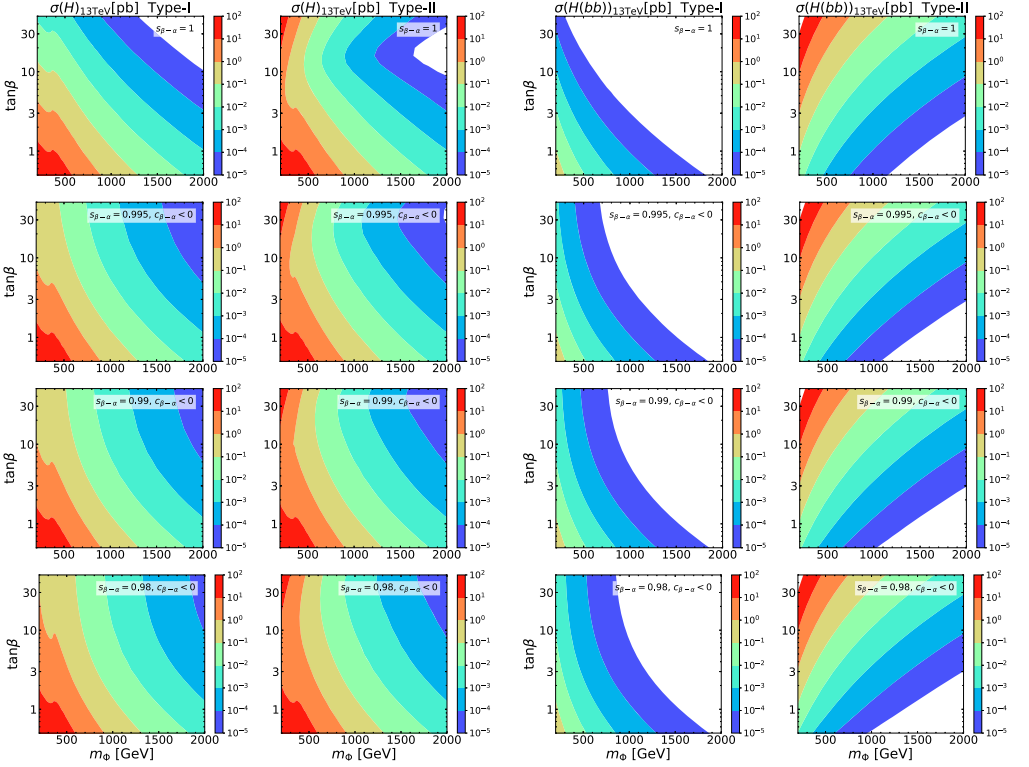


Fig. 6. Production cross sections for the CP-even heavy Higgs boson H at the 13 TeV LHC on the m_ϕ - $\tan\beta$ plane. Panels in two columns from the left (right) show the production via the gluon fusion (the bottom-quark associated) in the Type-I and Type-II THDMs, where the value of $s_{\beta-\alpha}$ is set to be 1, 0.995, 0.99 and 0.98 with $c_{\beta-\alpha} < 0$ from the top to the bottom panels. The cross sections are shown with different colors from blue to red, corresponding to from 10^{-5} pb to 10^2 pb. (For interpretation of the colors in the figure(s), the reader is referred to the web version of this article.)

The value of $s_{\beta-\alpha}$ is set to be 1, 0.995, 0.99, and 0.98 with $c_{\beta-\alpha} < 0$ from the top to the bottom panels.

For the gluon-fusion process, shown in the left two columns in Fig. 6, the Higgs bosons are produced via quark loops. Therefore, the difference of the Yukawa sector between Type-I and Type-II in Eq. (19) leads to significantly different dependence on the model parameters. In Type-I, where the top-quark loop is entirely dominant, the larger $\tan\beta$ is, the smaller the cross section is for a fixed mass. One can also see the threshold enhancement of the top-quark loop at $m_\phi \sim 2m_t$. In Type-II, the top-quark loop is dominant for small $\tan\beta$, while the production via the bottom-quark loop becomes dominant for large $\tan\beta$ because of the bottom-Yukawa enhancement. The $s_{\beta-\alpha}$ dependence of the cross sections is very small for small $\tan\beta$. In the large $\tan\beta$ region, on the other hand, the cross sections for a fixed mass tend to be larger as $s_{\beta-\alpha}$ deviates from the alignment limit. The production via the bottom-quark associated process, shown in the right two columns in Fig. 6, is entirely subdominant in Type-I, while that becomes dominant for large $\tan\beta$ in Type-II.

In Fig. 7, similar to Fig. 6, but for $c_{\beta-\alpha} > 0$, we show the production rates. In this case, except for the b -associate process in Type-II, the cross sections show a peculiar $\tan\beta$ dependence since

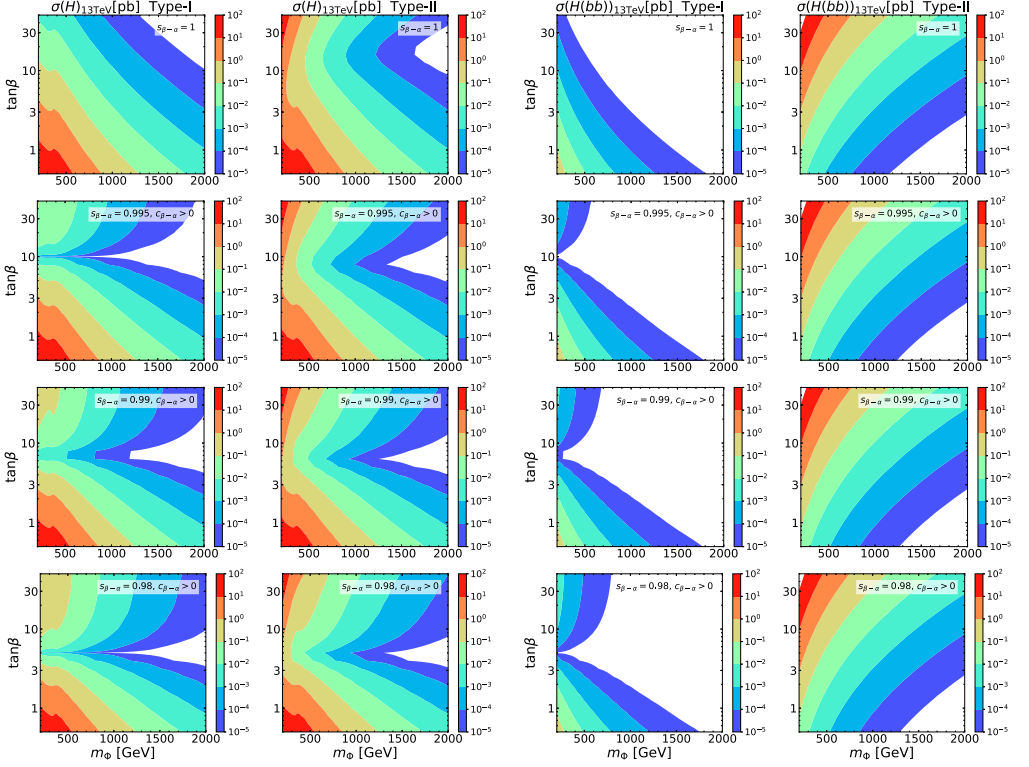


Fig. 7. Production cross sections for the CP-even heavy Higgs boson H at the 13 TeV LHC on the m_ϕ - $\tan\beta$ plane. Panels in two columns from the left (right) show the production via the gluon fusion (the bottom-quark associated) in the Type-I and Type-II THDMs, where the value of $s_{\beta-\alpha}$ is set to be 1, 0.995, 0.99 and 0.98 with $c_{\beta-\alpha} > 0$ from the top to the bottom panels. The cross sections are shown with different colors from blue to red, corresponding to from 10^{-5} pb to 10^2 pb.

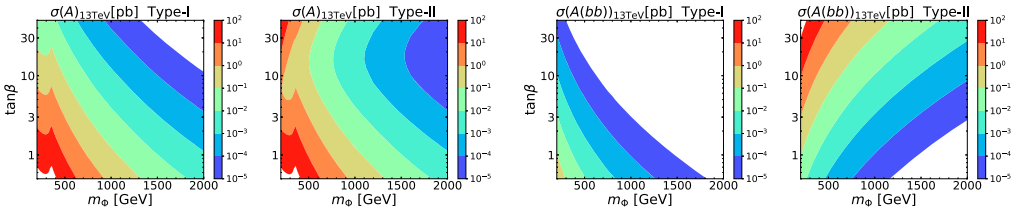


Fig. 8. Production cross sections for the CP-odd Higgs boson A at the 13 TeV LHC on the m_ϕ - $\tan\beta$ plane. Panels from the left to the right show the production via the gluon fusion in the Type-I and Type-II THDMs, and via the bottom-quark associated process in the Type-I and Type-II THDMs, respectively.

the top and the bottom Yukawa in Type-I and the top Yukawa in Type-II, given in Eq. (19), vanishes for a certain $s_{\beta-\alpha}$ and $\tan\beta$; e.g., $\tan\beta \sim 10$ for the $s_{\beta-\alpha} = 0.995$ case.

Fig. 8 presents production rates for the CP-odd Higgs boson A . The production processes are same as those for H , shown in Figs. 6 and 7, namely the gluon fusion process (left two columns) and the bottom-quark associated process (right two columns). Different from the CP-even Higgs bosons, the production rates only depend on $\tan\beta$ because of the Yukawa structure in Eq. (19).

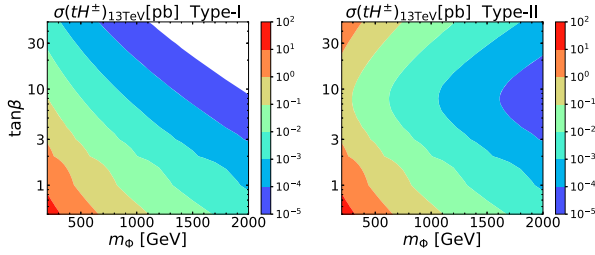


Fig. 9. Production cross sections for the charged Higgs boson H^\pm at the 13 TeV LHC on the m_Φ - $\tan\beta$ plane in the Type-I (left) and Type-II (right) THDMs.

The global parameter dependence of the cross sections via the gluon fusion is similar to that for H with $s_{\beta-\alpha} = 1$, but the production rate for A is slightly larger than that for H at each point on the m_Φ - $\tan\beta$ plane. The parameter dependence of the cross sections via the bottom-quark annihilation is as same as for H with $s_{\beta-\alpha} = 1$.

In Fig. 9, at the LHC charged Higgs bosons H^\pm are mainly produced in association with a top quark via $gb \rightarrow tH^\pm$ for $m_{H^\pm} > m_t$, whose cross sections are shown. Similar to the productions for A , the cross section only depends on $\tan\beta$. For a fixed mass, in Type-I, the larger $\tan\beta$ is, the smaller the production rate is. In Type-II, on the other hand, up to $\tan\beta \sim 7$, the larger $\tan\beta$ is, the smaller the production rate is, similar to the Type-I case. However, for $\tan\beta \gtrsim 7$, the production rate becomes larger for larger $\tan\beta$ due to $\tan\beta$ enhancement of the bottom-Yukawa coupling.

We here mention other heavy Higgs boson productions. Although we assume $m_{H^\pm} = m_H$ in this study, if the $H/A \rightarrow H^\pm W^\mp$ decay is kinematically allowed, the production via $gg \rightarrow H \rightarrow H^\pm W^\mp$ can be comparable with that via $gb \rightarrow tH^\pm$ [172–175]. Heavy Higgs bosons are also produced in electroweak processes such as HA , $H^\pm h/H/A$, and H^+H^- [176,177], as well as in loop induced processes such as $H^\pm W^\mp$ [178] and H^+H^- [179].

4.2. Constraints from the direct searches

Now, let us turn to discuss constraints on the parameter space in each THDM from direct searches for heavy Higgs bosons with the LHC Run-II data.

In Fig. 10, we show exclusion regions at 95% CL on the m_Φ - $\tan\beta$ plane in the Type-I, Type-II, Type-X and Type-Y THDMs (from the left to the right panels) via various direct searches for heavy Higgs bosons with the 36 fb^{-1} LHC Run-II data listed in Table 2. The value of $s_{\beta-\alpha}$ is set to be 1, 0.995, 0.99 and 0.98 with $c_{\beta-\alpha} < 0$ from the top to the bottom panels. The shaded regions with dotted, solid, and dashed border lines denote the exclusion regions for H , A , and H^\pm , respectively.

Each exclusion region is understood by each production rate, shown in Figs. 6–9, times each branching ratio, depicted in Figs. 2–5. We highlight several points for A , H and H^\pm in order.

Regarding to the CP-odd Higgs boson A ;

- For large $\tan\beta$, exclusion regions only appear in the Type-II and the Type-Y THDMs, in which the production via the bottom-quark loop as well as the bottom-quark associated production becomes dominant.

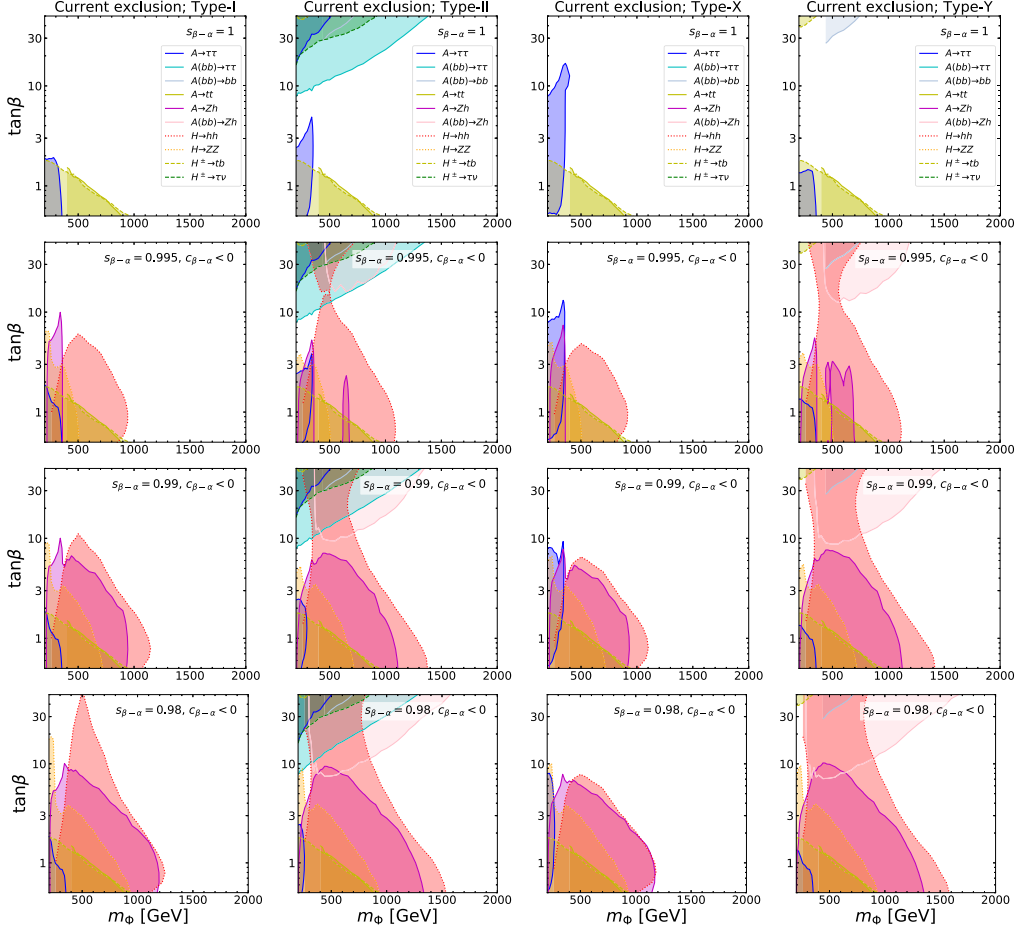


Fig. 10. Regions on the m_ϕ – $\tan\beta$ plane excluded at 95% CL in the Type-I, Type-II, Type-X and Type-Y THDMs (from the left to the right panels) via direct searches for heavy Higgs bosons with the 36 fb^{-1} LHC Run-II data. The value of $s_{\beta-\alpha}$ is set to be 1, 0.995, 0.99 and 0.98 with $c_{\beta-\alpha} < 0$ from the top to the bottom panels.

- The $A \rightarrow \tau\bar{\tau}$ channel is significant only for $m_A < 2m_t$ or for large $\tan\beta$ in Type-II. We note that, although the branching ratio of the $A \rightarrow \tau\bar{\tau}$ decay is even dominant for large $\tan\beta$ in Type-X, the production rate is too small to be constrained.⁴ For $m_A > 2m_t$, the $A \rightarrow t\bar{t}$ channel becomes relevant in the small $\tan\beta$ region in all the types.⁵
- Since the $A \rightarrow Zh$ decay only occurs for the non-alignment case, the exclusion regions are remarkably different between for the alignment case and for the non-alignment case. The region of the exclusion from the $A \rightarrow Zh$ channel becomes larger from $s_{\beta-\alpha} = 0.995$ to 0.98, since the decay rate for $A \rightarrow Zh$ is proportional to $c_{\beta-\alpha}^2$.

⁴ Four- τ final states from the $pp \rightarrow HA$ process in Type-X can be relevant [180].

⁵ Because there is no specific analysis for the spin-0 resonance in the $t\bar{t}$ final state in the LHC Run-II, we use the limit for Z' [5], which is valid from the Run-I 8 TeV analysis [181].

Table 3

95% CL allowed range of $\tan\beta$ for the case with $c_{\beta-\alpha} < 0$ ($c_{\beta-\alpha} > 0$) from the signal strength of the discovered Higgs boson at the LHC [1]. The hyphen denotes no allowed region.

$s_{\beta-\alpha}$	Type-I	Type-II	Type-X	Type-Y
0.995	$t_\beta \geq 0.54$ ($t_\beta \geq 0.54$)	$-(0.57 \leq t_\beta \leq 1.6)$	$0.43 \leq t_\beta \leq 4.1$ ($0.42 \leq t_\beta \leq 4.2$)	$-(-)$
0.990	$t_\beta \geq 0.86$ ($t_\beta \geq 0.86$)	$-(-)$	$0.71 \leq t_\beta \leq 2.0$ ($0.72 \leq t_\beta \leq 2.5$)	$-(-)$
0.980	$t_\beta \geq 1.3$ ($t_\beta \geq 1.3$)	$-(-)$	$-(-)$	$-(-)$

Regarding to the CP-even heavier Higgs boson H ;

- The production rate via the gluon fusion for the heavier CP-even Higgs boson H is smaller than that for the A production, as mentioned above. Moreover, in the non-alignment case, the fermionic branching ratios of H for low $\tan\beta$ are smaller than those for A due to the decays into a pair of the weak gauge bosons, which are forbidden for A . Therefore, the constraints are slightly weaker than the A case, and we do not present the exclusions explicitly for the $H \rightarrow \tau\bar{\tau}$, $H(b\bar{b}) \rightarrow \tau\bar{\tau}$, $H(b\bar{b}) \rightarrow b\bar{b}$ and $H \rightarrow t\bar{t}$ channels.
- For $m_H > 2m_{W,Z}$ and/or $m_H > 2m_h$, the peculiar decay modes for H are $H \rightarrow WW$, $H \rightarrow ZZ$ and $H \rightarrow hh$ for the non-alignment case and give rise to the relatively large exclusions. The region of the constraint from $H \rightarrow WW$ is similar to $H \rightarrow ZZ$, but smaller, so we do not show it explicitly.
- We note that, as mentioned in Sec. 3, the $H \rightarrow hh$ decay depends on M^2 . For a non-degenerate case $M \neq m_\phi$, the exclusion region from the $H \rightarrow hh$ channel can be different that for the degenerate case.

Regarding to the charged Higgs boson H^\pm ;

- For the near alignment scenario, in the low $\tan\beta$ region ($\tan\beta \lesssim 5$), the $H^\pm \rightarrow tb$ decay is dominant for all the types, therefore the exclusions of the low-mass and low- $\tan\beta$ region from the $H^\pm \rightarrow tb$ channel are almost same for all the panels.
- In the large $\tan\beta$ region, the constraint from the $H^\pm \rightarrow \tau\nu$ channel can be significant only in Type-II. Although the branching ratio of the $H^\pm \rightarrow \tau\nu$ is even dominant for large $\tan\beta$ in Type-X, the constraint is insignificant due to the small production rate.
- We note that, as mentioned in Sec. 2, in Type-II and Type-Y there is an independent constrain from flavor observables on the mass of charged Higgs bosons, $m_{H^\pm} \gtrsim 800$ GeV.

Fig. 11 shows the same as in Fig. 10, but for the $c_{\beta-\alpha} > 0$ case. The global picture of the exclusion regions is same as for the $c_{\beta-\alpha} < 0$ case. A remarkable difference is that the constraints for H in the non-alignment case are much weaker for around $\tan\beta \sim 7 - 10$ due to the strong suppression of the production rates. Although $\sigma(A \rightarrow Zh)$ does not depend on the sign of $c_{\beta-\alpha}$, the exclusion regions for $c_{\beta-\alpha} > 0$ in Type-II and Y are smaller than those for $c_{\beta-\alpha} < 0$. This is because the analysis includes the $h \rightarrow b\bar{b}$ decay, whose branching ratio has a singular behavior for $c_{\beta-\alpha} > 0$; see Figs. 4 and 5.

Before closing this section, we briefly discuss the signal strength for the discovered Higgs boson measured at the LHC Run-II experiment, which provides independent constraints on the parameter space from those given by the direct searches discussed in this section. Measurements of the signal strength set constraints on the Higgs boson couplings; i.e., the κ values defined in Sec. 2, which can be translated into those on $s_{\beta-\alpha}$ and $\tan\beta$. In Table 3, we summarize the 95%

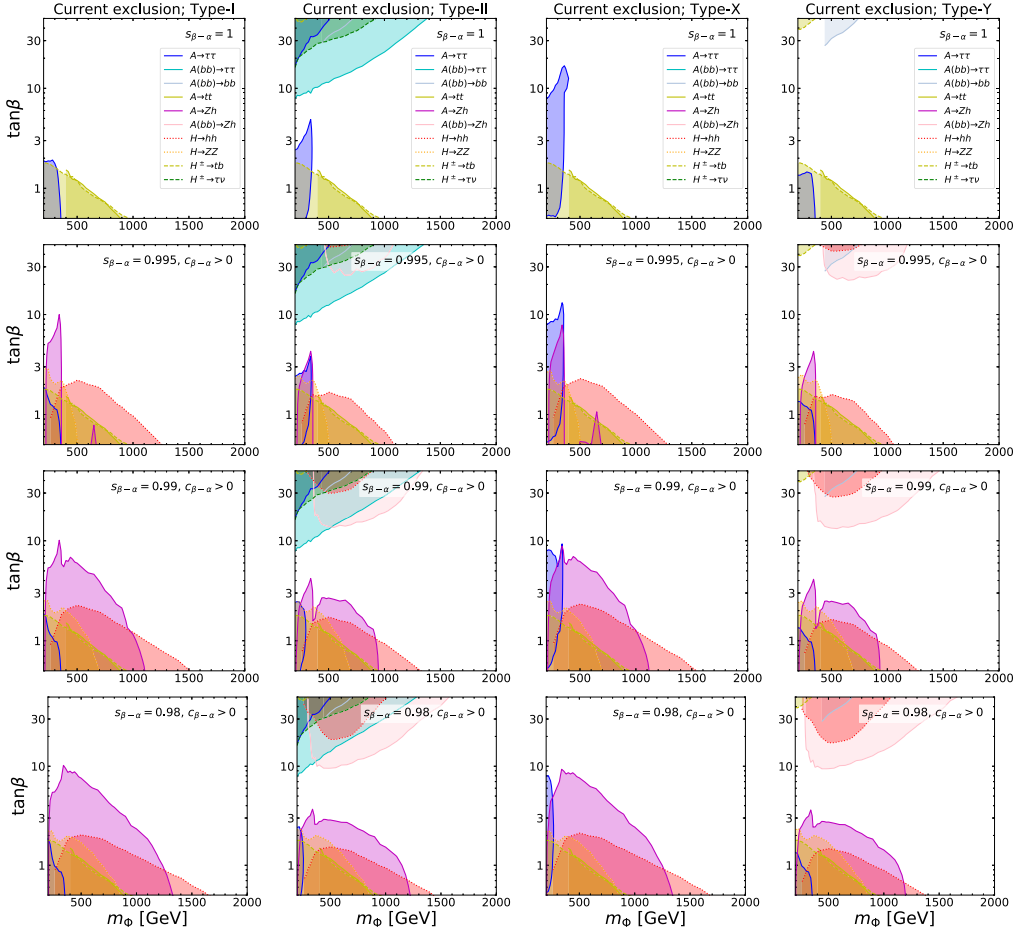


Fig. 11. Regions on the m_Φ - $\tan\beta$ plane excluded at 95% CL in the Type-I, Type-II, Type-X and Type-Y THDMs (from the left to the right panels) via direct searches for heavy Higgs bosons with the 36 fb^{-1} LHC Run-II data. The value of $s_{\beta-\alpha}$ is set to be 1, 0.995, 0.99 and 0.98 with $c_{\beta-\alpha} > 0$ from the top to the bottom panels.

CL allowed range of $\tan\beta$ in the THDMs with fixed values of $s_{\beta-\alpha}$. The κ values are extracted from Ref. [1], which are presented in Table 4 as a reference. We see that except for the Type-I THDM it gives severe constraints on $\tan\beta$, because κ_b and/or κ_τ can significantly differ from unity in the Type-II, Type-X and Type-Y THDMs even for the approximate alignment case.

5. Combined results of direct searches at the HL-LHC and precision tests at the ILC

Now, let us turn to investigate how the current parameter space in the THDMs discussed in the previous section can be explored further in future experiments, especially by direct searches for heavy Higgs bosons at the HL-LHC as well as by precision measurements of the Higgs boson couplings at the ILC. We note that complementarity for direct searches for heavy Higgs bosons between at the LHC and the ILC500 was discussed for the THDMs in Ref. [86].

Table 4

Summary for the current measurements and expected 1σ accuracies of the κ values. For the current measurements, we refer to the values, assuming that the branching ratio of the decay into BSM particles is zero, which are given by the ATLAS experiments with 80 fb^{-1} [1] and the CMS experiments with 137 fb^{-1} [2]. For the HL-LHC, we refer to the expected accuracies given in Ref. [93] using systematic uncertainties at the Run-II experiment. For the ILC250, we refer to the expected accuracies given by the ILC with 250 GeV and 2000 fb^{-1} [20]. For the ILC500, the expected accuracies are based on the results of the ILC250 combining the simulations at $\sqrt{s} = 350 \text{ GeV}$ with 200 fb^{-1} and those at $\sqrt{s} = 500 \text{ GeV}$ with 4000 fb^{-1} [20].

	Current (ATLAS, CMS)	HL-LHC (ATLAS, CMS)	ILC250	ILC500 (1σ [%])
κ_Z	$(1.11 \pm 0.08, 0.96 \pm 0.07)$	(2.6, 2.4)	0.38	0.30
κ_W	$(1.05 \pm 0.09, -1.11^{+0.14}_{-0.09})$	(3.1, 2.6)	1.8	0.40
κ_b	$(1.03^{+0.19}_{-0.17}, 1.18^{+0.19}_{-0.27})$	(6.2, 6.0)	1.8	0.60
κ_t	$(1.09^{+0.15}_{-0.14}, 1.01 \pm 0.11)$	(6.3, 5.5)	–	6
κ_c	(–, –)	(–, –)	2.4	1.2
κ_τ	$(1.05^{+0.16}_{-0.15}, 0.94 \pm 0.12)$	(3.7, 2.8)	1.9	0.80
κ_μ	$(-, 0.92^{+0.55}_{-0.87})$	(7.7, 6.7)	5.6	5.1
κ_g	$(0.99^{+0.11}_{-0.10}, 1.16^{+0.12}_{-0.11})$	(4.2, 4.0)	2.2	0.97
κ_γ	$(1.05 \pm 0.09, 1.01^{+0.09}_{-0.14})$	(3.7, 2.9)	1.1	1.0
$\kappa_{Z\gamma}$	(–, –)	(12.7, –)	16	16
κ_h	(–, –)	(–, –)	–	27

In order to obtain the sensitivity projection to the HL-LHC with 3000 fb^{-1} of integrated luminosity, we rescale the current expected sensitivity by $\sqrt{3000/36} \sim 9.1$. We also perform a further rescaling of the sensitivity from $\sqrt{s} = 13 \text{ TeV}$ to $\sqrt{s} = 14 \text{ TeV}$ by taking into account the ratio of the signal cross sections, $\sigma(m_\phi)_{14\text{TeV}}/\sigma(m_\phi)_{13\text{TeV}}$. Here, we assume that signal and background increase by the same amount from 13 TeV to 14 TeV, which can be conservative particularly for the high-mass region. Detailed projection with systematic uncertainties for the $\phi \rightarrow \tau\bar{\tau}$ channel was performed in the report for the HL-LHC [93], where one can see the higher sensitivity for $m_\phi \gtrsim 1200 \text{ GeV}$.

In addition, from precision measurements of the 125 GeV Higgs boson couplings, we can further constrain the parameter space in the THDMs. In Table 4, we summarize the current measurements of the κ values at the LHC Run-II and the expected 1σ accuracies of their measurements at the HL-LHC and at the ILC. As we can see, the current uncertainties of the measured κ values are not small, 10% and 10–20% level for κ_V and κ_f , respectively. However, these uncertainties can be reduced significantly at those future collider experiments; e.g., κ_Z is expected to be measured with a few percent at the HL-LHC and less than 1% at the ILC. As we explained in Sec. 2, if a nonzero deviation in a Higgs boson coupling is confirmed, an upper limit on the mass of the additional Higgs bosons can be given because the decoupling limit is no longer realized. In the following discussion, we numerically derive the upper limit on the common mass of the additional Higgs bosons m_ϕ by imposing the bounds from perturbative unitarity and vacuum stability, which are discussed in Sec. 2. We will see that the upper limit appears for the non-alignment case $s_{\beta-\alpha} \neq 1$, depending on the value of $\tan\beta$.

In Fig. 12, we show regions on the m_ϕ – $\tan\beta$ plane expected to be excluded at 95% CL in the Type-I, Type-II, Type-X and Type-Y THDMs (from the left to the right panels) via direct searches for heavy Higgs bosons at the HL-LHC and via precision measurements of the Higgs boson

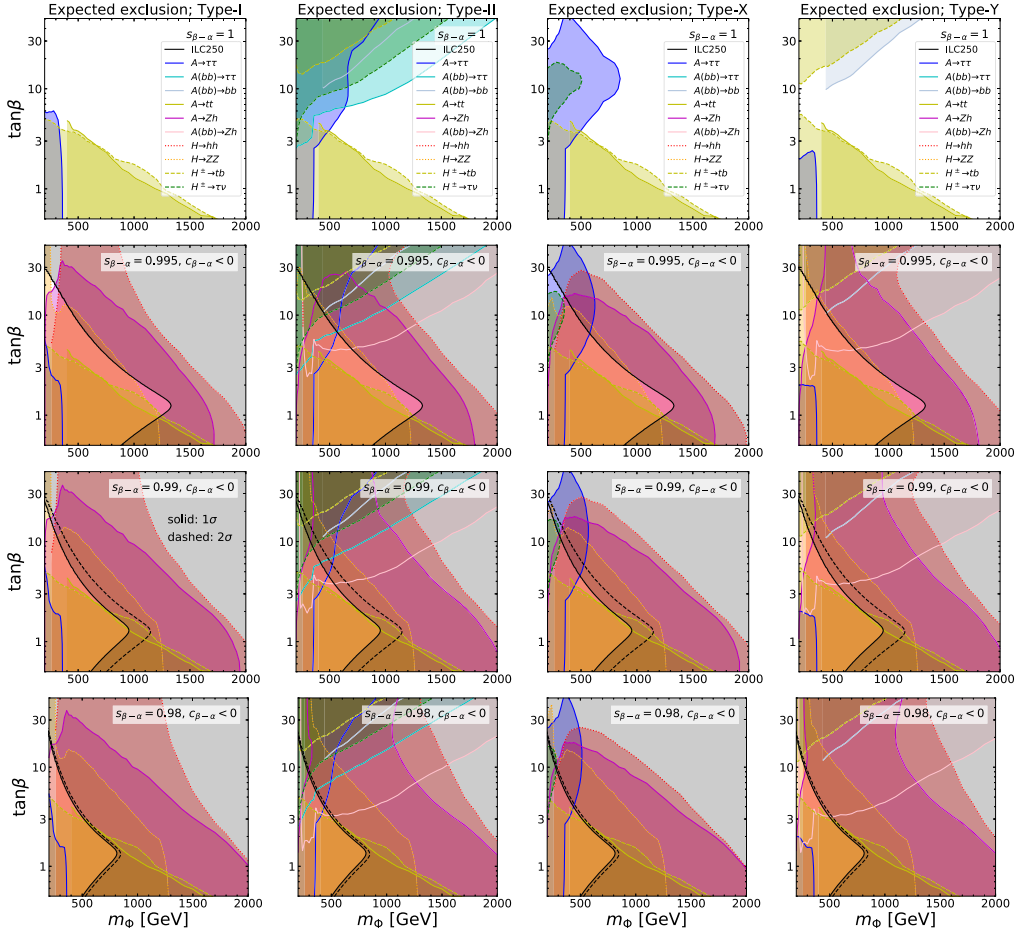


Fig. 12. Regions on the m_ϕ - $\tan\beta$ plane expected to be excluded at 95% CL in the Type-I, Type-II, Type-X and Type-Y THDMs (from the left to the right panels) via direct searches for heavy Higgs bosons at the HL-LHC and via precision measurements of the Higgs boson couplings at the ILC. The value of $s_{\beta-\alpha}$ is set to be 1, 0.995, 0.99 and 0.98 with $c_{\beta-\alpha} < 0$ from the top to the bottom panels.

couplings at the ILC. The search channels we consider are same as for the current constraints in Figs. 10 and 11. The value of $s_{\beta-\alpha}$ is set to be 1, 0.995, 0.99 and 0.98 with $c_{\beta-\alpha} < 0$ from the top to the bottom panels. The shaded regions with solid, dotted, and dashed border lines denote the exclusion regions for A , H , and H^\pm , respectively.

The global picture of the exclusion regions from the direct searches is similar to the current exclusions, but much wider parameter regions are excluded. Especially, for the non-alignment case $s_{\beta-\alpha} \neq 1$, the large portion in this parameter space is excluded via the $A \rightarrow Zh$ and $H \rightarrow hh$ channels, which set the lower-mass limit with a given $\tan\beta$. We note again that the exclusion region from the $H \rightarrow hh$ channel can be different for the $M \neq m_\phi$ case.

Black shaded regions are the regions excluded from the constraints of perturbative unitarity and/or vacuum stability. Here, we assume the precision at the ILC250, and the Higgs boson cou-

plings with weak bosons deviate with 1σ (2σ) level, which corresponds to black solid (dashed) curves, as

$$\kappa_V^h = [0.995, 0.99, 0.98] \pm 0.0038 \text{ (0.0076)}. \quad (66)$$

For these constraints, we scan the value of M^2 with $M^2 > 0$, so that the black shaded region indicates that there is no value of M^2 which simultaneously satisfies the unitarity and the vacuum stability bounds. In the above sense, the black region can be regarded as a conservative excluded region. Interestingly, it is seen that a non-zero deviation for the 125 GeV Higgs couplings from the SM prediction sets an upper limit of the heavy Higgs masses. For $s_{\beta-\alpha} = 0.995$, the alignment limit is included by the 2σ error, so that the dashed curve does not appear.

Details of the behavior of the upper limit from precision measurements on m_ϕ , shown in Fig. 12, are following, where explicit formulae of the constraints are given in Appendix A. For $c_{\beta-\alpha} < 0$, the third condition of the vacuum stability bound given in Eq. (A.7) sets an upper limit on M which is slightly smaller than m_ϕ almost without depending on the value of $\tan\beta$; e.g., $M \gtrsim 680, 730$ and 780 GeV being excluded for $x = -0.1$ and $m_\phi = 800, 900$ and 1000 GeV, respectively, where $x \equiv \pi/2 - (\beta - \alpha)$. The important point here is that the required value of $m_\phi^2 - M^2 (> 0)$ gets larger for a larger value of m_ϕ . Whereas, the unitarity bound excludes a larger difference between M^2 and m_ϕ^2 , which makes magnitudes of the λ parameters larger, as seen in Eqs. (A.8)–(A.11). Therefore, for a fixed value of $s_{\beta-\alpha}$ and $\tan\beta$ we can find a critical value of m_ϕ^2 , above which the solution of the value of M^2 to satisfy the both unitarity and vacuum stability bounds vanishes. Such an upper limit on m_ϕ becomes stronger when the value of $\tan\beta$ differs from unity because the λ_1 or λ_2 parameter becomes significant so that the unitarity bound sets more severe constraint on $|M^2 - m_\phi^2|$. We here emphasize that the entire parameter space we consider is explored by combining the constraints from the direct searches at the HL-LHC and from the precision measurements of the 125 GeV Higgs boson couplings at the ILC.⁶

Fig. 13 shows the same as in Fig. 12, but for the $c_{\beta-\alpha} > 0$ case. Because of the singular behaviors of the production cross section for H and of the branching ratios for h around $\tan\beta \sim 7 - 10$, shown in Figs. 7 and 5, a narrow parameter region in the Type-II and the Type-Y models remains without any constraints from the direct searches even for low m_ϕ . Similar to Fig. 12, there appears an upper limit on m_ϕ by the constraints of unitarity and vacuum stability in Fig. 13. A remarkable difference, however, arises from the vacuum stability bound as compared with the case for $c_{\beta-\alpha} < 0$. In this case with a low $\tan\beta$ region, the condition $\lambda_2 > 0$ sets an upper limit on M^2 for a fixed value of m_ϕ^2 with $M^2 \lesssim m_\phi^2$. This upper limit on M^2 gets milder when $\tan\beta$ becomes larger. When $\tan\beta$ exceeds a certain value, the upper limit on M^2 is almost fixed to be m_ϕ^2 due to the condition $\lambda_1 > 0$ instead of $\lambda_2 > 0$. Such a non-trivial $\tan\beta$ dependence on the vacuum stability bound provides two peaks of the upper limit on m_ϕ as seen in Fig. 13. As a result, some small parameter regions remain uncovered by both the HL-LHC and the ILC250.

We here give a comment on the case, where the degeneracy between the common mass of the additional Higgs bosons m_ϕ and M is relaxed. In the above analysis, we have set $M = m_\phi$ in the analysis of the exclusion region by the direct searches for simplicity. As we have mentioned in Sec. 3, the decay width for $H \rightarrow hh$ depends on the value of M , and the exclusion region for H might change if we consider the case of $M \neq m_\phi$. We note, however, that most of the parameter

⁶ While we study the excluded regions by utilizing the future sensitivity for the hZZ coupling, similar analysis can be performed by using an expected accuracy for other Higgs boson couplings. For example, by assuming the central values of the hff couplings and the sensitivity at the ILC, we can explore the parameter regions in $(s_{\beta-\alpha}-\tan\beta)$ plane.

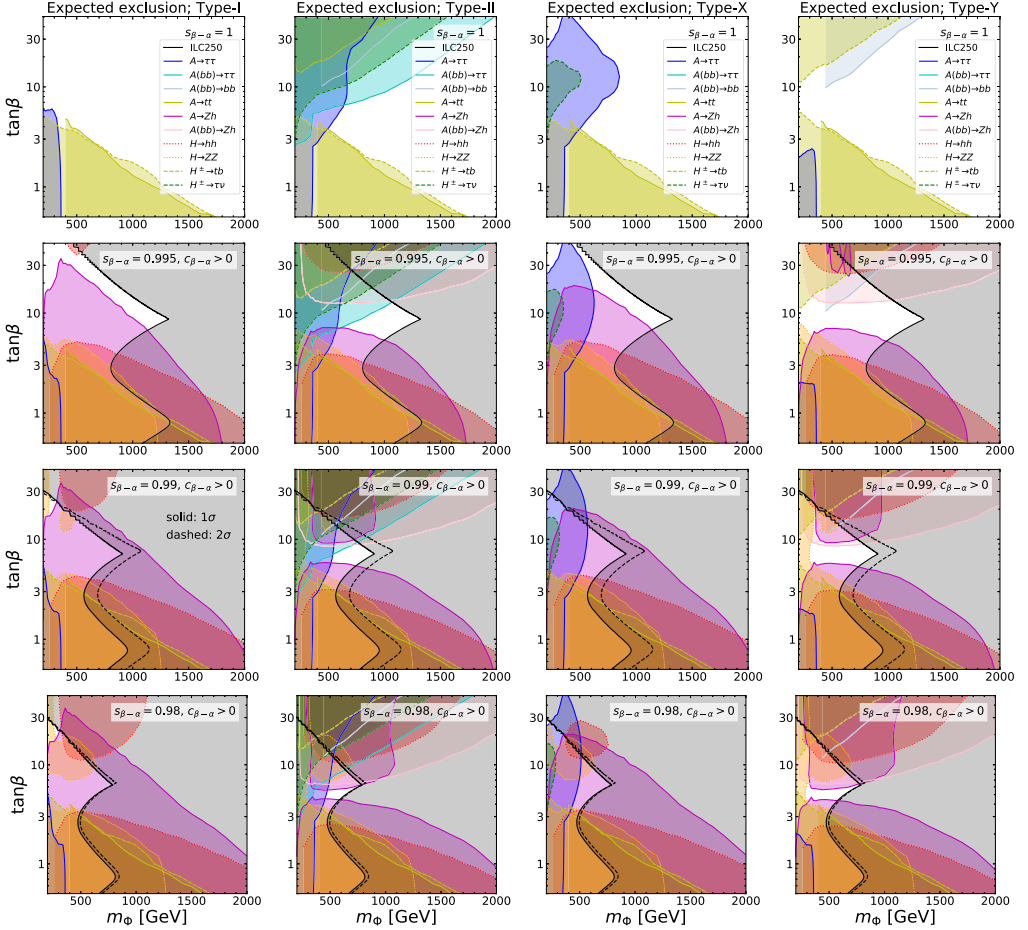


Fig. 13. Regions on the m_Φ - $\tan\beta$ plane expected to be excluded at 95% CL in the Type-I, Type-II, Type-X and Type-Y THDMs (from the left to the right panels) via direct searches for heavy Higgs bosons at the HL-LHC and via precision measurements of the Higgs boson couplings at the ILC. The value of $s_{\beta-\alpha}$ is set to be 1, 0.995, 0.99 and 0.98 with $c_{\beta-\alpha} > 0$ from the top to the bottom panels.

regions excluded by $H \rightarrow hh$ are also excluded by the $A \rightarrow Zh$ decay mode, which does not depend on the value of M . Therefore, our main conclusion does not change even if we relax the degeneracy among m_Φ and M .

Before closing this section, we give a comment on a very near-alignment case such as $s_{\beta-\alpha} = 0.9999$, where the $\tan\beta$ value in all the types of the THDMs has not been completely constrained by the signal strength of the discovered Higgs boson at the LHC [1]. In Fig. 14 we show regions on the m_Φ - $\tan\beta$ plane expected to be excluded at 95% CL via direct searches for heavy Higgs bosons at the HL-LHC for $s_{\beta-\alpha} = 0.9999$ with $c_{\beta-\alpha} < 0$ ($c_{\beta-\alpha} > 0$) in the top (bottom) panels. The regions in the Type-I, Type-II, Type-X and Type-Y THDMs are shown from the left to the right panels, respectively. Different from Figs. 12 and 13, there is no constraint from the ILC since the ILC cannot detect the deviation of the Higgs couplings with weak bosons from the SM prediction even at the 1σ level if $s_{\beta-\alpha} > 0.9962$; see Eq. (66). The regions excluded by

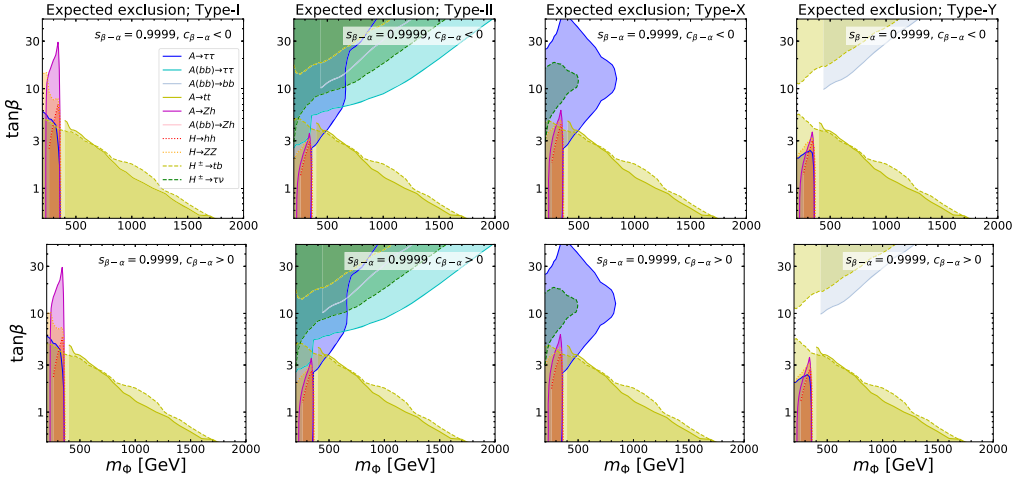


Fig. 14. Regions on the m_ϕ – $\tan\beta$ plane expected to be excluded at 95% CL in the Type-I, Type-II, Type-X and Type-Y THDMs (from the left to the right panels) via direct searches for heavy Higgs bosons at the HL-LHC. The value of $s_{\beta-\alpha}$ is set to be 0.9999 with $c_{\beta-\alpha} < 0$ ($c_{\beta-\alpha} > 0$) in the top (bottom) panels.

the HL-LHC are very similar to those in the alignment scenario with $s_{\beta-\alpha} = 1$ due to strong suppression of the $H \rightarrow hh$ and $A \rightarrow Zh$ decays except for the region of $m_\phi < 2m_t$ with low $\tan\beta$ denoted by the red shaded region in the figures. Therefore, in this case there remain large parameter regions which cannot be excluded even at the HL-LHC.

To summarize, the entire parameter space in the THDMs can be explored by the synergy between the direct searches at the HL-LHC and the precision measurements of the 125 GeV Higgs boson couplings at the ILC. In other words, if we observed any deviations for the Higgs boson couplings at the ILC, we would be able to find additional Higgs bosons at the HL-LHC, or reject a certain type of new physics models. In order to quantify the above statement, we have also checked the 5σ discovery sensitivity by naive rescaling. We find that the discovery regions are certainly smaller than the 95% CL excluded region shown in Figs. 12 and 13. Consequently, for $c_{\beta-\alpha} < 0$, we find that most of the parameter space is covered by the direct searches at the HL-LHC and the precision tests at the ILC250. For $c_{\beta-\alpha} > 0$, on the other hand, some parameter regions appear, which requires more data and/or more precision to be explored.

6. Conclusions

We have discussed the possibility that a wide region of the parameter space in the four types of the THDMs can be explored by the combination of the direct searches for the additional Higgs bosons at the LHC and precision measurements of the discovered Higgs boson couplings at future lepton colliders. The direct searches give lower limits on the masses of the additional Higgs bosons, while the precision measurements set upper limits by using the perturbative unitarity and the vacuum stability bounds. Thus, these two searches play a complementary role to explore the parameter space. We first have shown that the parameter region excluded by the direct search at the LHC Run-II, and then shown that the exclusion expected by using the synergy between the direct searches at the HL-LHC and the precision tests assuming the accuracy expected for the measurements of the Higgs boson couplings at the ILC with a collision energy of 250 GeV. It

has been found that in the nearly alignment scenario most of the parameter space is explored by the direct searches of extra Higgs bosons and the precision tests. In the alignment limit where all the Higgs boson couplings take the SM-like values, there are parameter regions which cannot be excluded due to the suppression of the Higgs to Higgs decays, $H \rightarrow hh$ and $A \rightarrow Zh$, and no upper limit on the masses from the theoretical arguments.

CRedit authorship contribution statement

Masashi Aiko: Formal analysis, Software, Writing – original draft, Writing – review & editing. **Shinya Kanemura:** Conceptualization, Formal analysis, Supervision, Writing – review & editing. **Mariko Kikuchi:** Formal analysis, Software, Writing – original draft, Writing – review & editing. **Kentarou Mawatari:** Formal analysis, Software, Writing – original draft, Writing – review & editing. **Kodai Sakurai:** Formal analysis, Software, Writing – original draft, Writing – review & editing. **Kei Yagyu:** Formal analysis, Software, Writing – original draft, Writing – review & editing.

Declaration of competing interest

The authors declare that they have no known competing financial interests or personal relationships that could have appeared to influence the work reported in this paper.

Acknowledgements

This work is supported in part by the Grant-in-Aid on Innovative Areas, the Ministry of Education, Culture, Sports, Science and Technology, No. 16H06492, No. 18F18321, No. 18F18022 and No. 20H00160 [S.K.], Early-Career Scientists, No. 20K14474 [M.K.], JSPS KAKENHI Grant No. 18K03648 [K.M.], and Early-Career Scientists, No. 19K14714 [K.Y.]. M.A. was supported in part by the Sasakawa Scientific Research Grant from The Japan Science Society.

Appendix A. Bounds from unitarity and vacuum stability

The unitarity bound is defined by $|a_i| \leq 1/2$ as we discuss in Sec. 2, where the independent eigenvalues of the s -wave amplitude matrix are given by [94,105–107]

$$a_1^\pm = \frac{1}{32\pi} \left[3(\lambda_1 + \lambda_2) \pm \sqrt{9(\lambda_1 - \lambda_2)^2 + 4(2\lambda_3 + \lambda_4)^2} \right], \quad (\text{A.1})$$

$$a_2^\pm = \frac{1}{32\pi} \left[(\lambda_1 + \lambda_2) \pm \sqrt{(\lambda_1 - \lambda_2)^2 + 4\lambda_4^2} \right], \quad (\text{A.2})$$

$$a_3^\pm = \frac{1}{32\pi} \left[(\lambda_1 + \lambda_2) \pm \sqrt{(\lambda_1 - \lambda_2)^2 + 4\lambda_5^2} \right], \quad (\text{A.3})$$

$$a_4^\pm = \frac{1}{16\pi} (\lambda_3 + 2\lambda_4 \pm 3\lambda_5), \quad (\text{A.4})$$

$$a_5^\pm = \frac{1}{16\pi} (\lambda_3 \pm \lambda_4), \quad (\text{A.5})$$

$$a_6^\pm = \frac{1}{16\pi} (\lambda_3 \pm \lambda_5). \quad (\text{A.6})$$

The vacuum stability bound is given by [109–112]

$$\lambda_1 > 0, \quad \lambda_2 > 0, \quad \sqrt{\lambda_1 \lambda_2} + \lambda_3 + \text{MIN}(0, \lambda_4 + \lambda_5, \lambda_4 - \lambda_5) > 0. \quad (\text{A.7})$$

As we see the above expression, the unitarity and the vacuum stability bounds constrain the value of the λ parameters. Thus, it would be convenient to express these parameters in terms of the physical parameters as follows:

$$\lambda_1 = \frac{1}{v^2} \left[(m_\Phi^2 - M^2) \tan^2 \beta + m_h^2 + 2 \tan \beta (m_\Phi^2 - m_h^2) x \right] + \mathcal{O}(x^2), \quad (\text{A.8})$$

$$\lambda_2 = \frac{1}{v^2} \left[(m_\Phi^2 - M^2) \cot^2 \beta + m_h^2 - 2 \cot \beta (m_\Phi^2 - m_h^2) x \right] + \mathcal{O}(x^2), \quad (\text{A.9})$$

$$\lambda_3 = \frac{1}{v^2} \left[m_\Phi^2 + m_h^2 - M^2 - 2 \cot 2\beta (m_\Phi^2 - m_h^2) x \right] + \mathcal{O}(x^2), \quad (\text{A.10})$$

$$\lambda_4 = \lambda_5 = \frac{M^2 - m_\Phi^2}{v^2}, \quad (\text{A.11})$$

where $m_\phi = m_H = m_A = m_{H^\pm}$, and $x \equiv \pi/2 - (\beta - \alpha)$ such that $x = 0$ corresponds to the alignment limit $s_{\beta-\alpha} = 1$.

Appendix B. Decay rates at the leading order

We present the analytic expressions of the decay rates of the Higgs boson at the LO. In order to specify the LO formula, the subscript 0 is put in the decay rate, Γ_0 .

B.1. Decays of the neutral Higgs bosons

We define $\phi = h, H$ or A and $\mathcal{H} = h$ or H . The decay rates into a fermion pair are given by

$$\Gamma_0(\phi \rightarrow f \bar{f}) = \sqrt{2} G_F \frac{m_\phi m_f^2}{8\pi} |\kappa_f^\phi|^2 N_c^f \lambda_\phi \left(\frac{m_f^2}{m_\phi^2}, \frac{m_f^2}{m_\phi^2} \right), \quad (\text{B.1})$$

where $N_c^f = 1$ (3) for f being a lepton (quark) and

$$\lambda_{h,H}(x, y) = \lambda^{3/2}(x, y), \quad \lambda_A(x, y) = \lambda^{1/2}(x, y), \quad (\text{B.2})$$

with

$$\lambda(x, y) = (1 - x - y)^2 - 2xy. \quad (\text{B.3})$$

The decay rates into a pair of on-shell weak bosons ($V = W, Z$) are given by

$$\Gamma_0(\phi \rightarrow VV) = \sqrt{2} G_F \frac{m_\phi^3}{4\pi c_V} (\kappa_V^\phi)^2 \left(\frac{3m_V^4}{m_\phi^4} - \frac{m_V^2}{m_\phi^2} + \frac{1}{4} \right) \lambda^{1/2} \left(\frac{m_V^2}{m_\phi^2}, \frac{m_V^2}{m_\phi^2} \right), \quad (\text{B.4})$$

where $c_V = 1$ (2) for $V = W$ (Z). When one of the weak bosons is off-shell, we obtain

$$\Gamma_0(\phi \rightarrow WW^*) = \frac{3m_W^4 G_F^2 m_\phi}{16\pi^3} (\kappa_V^\phi)^2 F \left(\frac{m_W}{m_\phi} \right), \quad (\text{B.5})$$

$$\Gamma_0(\phi \rightarrow ZZ^*) = \frac{m_Z^4 G_F^2 m_\phi}{64\pi^3} (\kappa_V^\phi)^2 F \left(\frac{m_Z}{m_\phi} \right) \left(7 - \frac{40}{3} s_W^2 + \frac{160}{9} s_W^4 \right), \quad (\text{B.6})$$

where

$$F(x) = -|1 - x^2| \left(\frac{47}{2}x^2 - \frac{13}{2} + \frac{1}{x^2} \right) + 3(1 - 6x^2 + 4x^4)|\log x| + \frac{3(1 - 8x^2 + 20x^4)}{\sqrt{4x^2 - 1}} \cos^{-1} \left(\frac{3x^2 - 1}{2x^3} \right). \tag{B.7}$$

The loop induced decay rates are given by

$$\Gamma_0(\phi \rightarrow \gamma\gamma) = \frac{\sqrt{2}G_F\alpha_{\text{em}}^2 m_\phi^3}{256\pi^3} \left| \kappa_V^\phi I_W^\phi + \sum_f \kappa_f^\phi Q_f^2 N_c^f I_F^\phi - \frac{\lambda_{H^+H^-}\phi}{v} I_S^\phi \right|^2, \tag{B.8}$$

$$\Gamma_0(\phi \rightarrow Z\gamma) = \frac{\sqrt{2}G_F\alpha_{\text{em}}^2 m_\phi^3}{128\pi^3} \left(1 - \frac{m_Z^2}{m_\phi^2} \right)^3 \times \left| \kappa_V^\phi J_W^\phi + \sum_f \kappa_f^\phi Q_f N_c^f v_f J_F^\phi - \frac{\lambda_{H^+H^-}\phi}{v} \frac{g_Z c_{2W}}{2} J_S^\phi \right|^2, \tag{B.9}$$

$$\Gamma_0(\phi \rightarrow gg) = \frac{\sqrt{2}G_F\alpha_s^2 m_\phi^3}{128\pi^3} \left| \sum_q \kappa_q^\phi I_q^\phi \right|^2, \tag{B.10}$$

where

$$I_W^\phi = \frac{2m_W^2}{m_\phi^2} \left[6 + \frac{m_\phi^2}{m_W^2} + (12m_W^2 - 6m_\phi^2)C_0(0, 0, m_\phi^2; m_W, m_W, m_W) \right], \tag{B.11}$$

$$I_F^\mathcal{H} = -\frac{8m_f^2}{m_\phi^2 \mathcal{H}} \left[1 + \left(2m_f^2 - \frac{m_\phi^2}{\mathcal{H}} \right) C_0(0, 0, m_\phi^2; m_f, m_f, m_f) \right], \tag{B.12}$$

$$I_F^A = -4m_f^2 C_0(0, 0, m_\phi^2; m_f, m_f, m_f), \tag{B.13}$$

$$I_S^\phi = \frac{2v^2}{m_\phi^2} [1 + 2m_{H^\pm}^2 C_0(0, 0, m_\phi^2; m_{H^\pm}, m_{H^\pm}, m_{H^\pm})], \tag{B.14}$$

$$J_W^\phi = \frac{2m_W^2}{s_W c_W (m_\phi^2 - m_Z^2)} \left\{ \left[c_W^2 \left(5 + \frac{m_\phi^2}{2m_W^2} \right) - s_W^2 \left(1 + \frac{m_\phi^2}{2m_W^2} \right) \right] \times \left[1 + 2m_W^2 C_0(0, m_Z^2, m_\phi^2; m_f, m_f, m_f) \right] + \frac{m_Z^2}{m_\phi^2 - m_Z^2} [B_0(m_\phi^2; m_W, m_W) - B_0(m_Z^2; m_W, m_W)] \right. \\ \left. - 6c_W^2 (m_\phi^2 - m_Z^2) C_0(0, m_Z^2, m_\phi^2; m_f, m_f, m_f) + 2s_W^2 (m_\phi^2 - m_Z^2) C_0(0, m_Z^2, m_\phi^2; m_f, m_f, m_f) \right\}, \tag{B.15}$$

$$J_F^\mathcal{H} = -\frac{8m_f^2}{s_W c_W (m_\phi^2 - m_Z^2)} \left[1 + \frac{1}{2} (4m_f^2 - m_\phi^2 + m_Z^2) C_0(0, m_Z^2, m_\phi^2; m_f, m_f, m_f) \right]$$

$$+ \frac{m_Z^2}{m_{\mathcal{H}}^2 - m_Z^2} [B_0(m_{\mathcal{H}}^2; m_f, m_f) - B_0(m_Z^2; m_f, m_f)], \tag{B.16}$$

$$J_F^A = -\frac{4m_f^2}{s_W c_W} C_0(0, m_Z^2, m_A^2; m_f, m_f, m_f), \tag{B.17}$$

$$J_S^\phi = \frac{2v^2}{e(m_\phi^2 - m_Z^2)} \left\{ 1 + 2m_{H^\pm}^2 C_0(0, m_Z^2, m_\phi^2; m_{H^\pm}, m_{H^\pm}, m_{H^\pm}) + \frac{m_Z^2}{m_\phi^2 - m_Z^2} [B_0(m_\phi^2; m_{H^\pm}, m_{H^\pm}) - B_0(m_Z^2; m_{H^\pm}, m_{H^\pm})] \right\}, \tag{B.18}$$

where C_0 and B_0 are the Passarino-Veltman functions [182].

The decay rates into a scalar and an on-shell weak boson is given by

$$\Gamma_0(\phi \rightarrow \phi' V) = \frac{|g_{\phi\phi'V}|^2 m_\phi^3}{16\pi m_V^2} \lambda^{3/2} \left(\frac{m_V^2}{m_\phi^2}, \frac{m_{\phi'}^2}{m_\phi^2} \right), \tag{B.19}$$

where the scalar-scalar-gauge couplings are given in Appendix of Ref. [38]. When the weak boson is off-shell, the decay rate is given by

$$\Gamma_0(\phi \rightarrow \phi' W^*) = 9g^2 |g_{\phi\phi'W}|^2 \frac{m_\phi}{128\pi^3} G \left(\frac{m_{\phi'}^2}{m_\phi^2}, \frac{m_W^2}{m_\phi^2} \right), \tag{B.20}$$

$$\Gamma_0(\phi \rightarrow \phi' Z^*) = 3g_Z^2 |g_{\phi\phi'Z}|^2 \frac{m_\phi}{256\pi^3} G \left(\frac{m_{\phi'}^2}{m_\phi^2}, \frac{m_Z^2}{m_\phi^2} \right) \left(7 - \frac{40}{3} s_W^2 + \frac{160}{9} s_W^4 \right), \tag{B.21}$$

where the function $G(x, y)$ is given as

$$G(x, y) = \frac{1}{12y} \left\{ 2(-1+x)^3 - 9(-1+x^2)y + 6(-1+x)y^2 + 6(1+x-y)y\sqrt{-\lambda(x, y)} \left[\tan^{-1} \left(\frac{-1+x-y}{\sqrt{-\lambda(x, y)}} \right) + \tan^{-1} \left(\frac{-1+x+y}{\sqrt{-\lambda(x, y)}} \right) \right] - 3[1+(x-y)^2-2y]y \log x \right\}. \tag{B.22}$$

Finally, the decay rates into two lighter scalar bosons are given by

$$\Gamma_0(\phi \rightarrow \phi' \phi'') = (1 + \delta_{\phi'\phi''}) \frac{|\lambda_{\phi\phi'\phi''}|^2}{16\pi m_\phi} \lambda^{1/2} \left(\frac{m_{\phi'}^2}{m_\phi^2}, \frac{m_{\phi''}^2}{m_\phi^2} \right). \tag{B.23}$$

An example of this type of the decay is $H \rightarrow hh$.

B.2. Decays of the charged Higgs bosons

Decays of the charged Higgs bosons into two on-shell fermions are given by

$$\Gamma_0(H^\pm \rightarrow f f') = \frac{G_F m_{H^\pm}}{4\sqrt{2}\pi} N_c^f C_f \lambda^{1/2} \left(\frac{m_f^2}{m_{H^\pm}^2}, \frac{m_{f'}^2}{m_{H^\pm}^2} \right)$$

$$\times \left[\left(1 - \frac{m_f^2}{m_{H^\pm}^2} - \frac{m_{f'}^2}{m_{H^\pm}^2} \right) \left\{ m_f^2 \zeta_f^2 + m_{f'}^2 \zeta_{f'}^2 \right\} + 4 \frac{m_f^2 m_{f'}^2}{m_{H^\pm}^2} \zeta_f \zeta_{f'} \right], \quad (\text{B.24})$$

where a factor C_f is $C_f = |V_{ud}|^2$ (1) for the decay into the up-type quark and the down-type quark (the lepton and the neutrino). The decay into an off-shell top quark and an on-shell down-type quark, $H^\pm \rightarrow t^* q_d \rightarrow W^\pm b q_d$ ($q_d = d, s, b$), is expressed by

$$\Gamma_0(H^\pm \rightarrow W^\pm b q_d) = \frac{3V_{tb}V_{tq_d}}{256\pi^3 m_{H^\pm}} g^2 \frac{m_t^4}{v^2} \zeta_u^2 H \left(\frac{m_t^2}{m_{H^\pm}^2}, \frac{m_W^2}{m_{H^\pm}^2} \right), \quad (\text{B.25})$$

with

$$\begin{aligned} H(x, y) = & \frac{1}{4x^3y} \left[2y^2 \{4(x-1)y + 3x\} \log y \right. \\ & + 2(x-1) \left\{ (3x-1)x^3 - 3(x+1)xy^2 + 4y^3 \right\} \log \frac{x-1}{x-y} \\ & \left. - x(y-1) \left\{ (6x-5)x^2 - 4(x-2)y^2 + (3x-2)xy \right\} \right], \quad (\text{B.26}) \end{aligned}$$

where the mass of down-type quark is neglected.

The on-shell decays into a neutral Higgs boson and a W boson are expressed by

$$\Gamma_0(H^\pm \rightarrow \phi W^\pm) = \frac{m_{H^\pm}^3}{16\pi m_W^2} |g_{H^\pm \phi W}|^2 \lambda^{\frac{3}{2}} \left(\frac{m_\phi^2}{m_{H^\pm}^2}, \frac{m_W^2}{m_{H^\pm}^2} \right), \quad (\text{B.27})$$

where the coupling $g_{H^\pm \phi W}$ for each neutral Higgs boson is given in Appendix of Ref. [38]. The decays into a neutral Higgs boson and an off-shell W boson is given by

$$\Gamma_0(H^\pm \rightarrow \phi W^{\pm*}) = 9 \frac{m_{H^\pm}}{128\pi^3} g^2 |g_{H^\pm \phi W}|^2 G \left(\frac{m_\phi^2}{m_{H^\pm}^2}, \frac{m_W^2}{m_{H^\pm}^2} \right). \quad (\text{B.28})$$

For the loop induced decay rates, $H^\pm \rightarrow W^\pm Z$ and $H^\pm \rightarrow W^\pm \gamma$, the concrete expressions of fermion loop contributions and boson loop contributions are given in Refs. [145,183] and Refs. [146,183], respectively.

References

- [1] ATLAS collaboration, G. Aad, et al., Combined measurements of Higgs boson production and decay using up to 80 fb⁻¹ of proton-proton collision data at $\sqrt{s} = 13$ TeV collected with the ATLAS experiment, Phys. Rev. D 101 (2020) 012002, arXiv:1909.02845.
- [2] CMS Collaboration, Combined Higgs boson production and decay measurements with up to 137 fb-1 of proton-proton collision data at $\sqrt{s} = 13$ TeV, Tech. Rep. CMS-PAS-HIG-19-005, CERN, Geneva, 2020.
- [3] ATLAS collaboration, M. Aaboud, et al., Search for additional heavy neutral Higgs and gauge bosons in the ditau final state produced in 36 fb⁻¹ of pp collisions at $\sqrt{s} = 13$ TeV with the ATLAS detector, J. High Energy Phys. 01 (2018) 055, arXiv:1709.07242.
- [4] ATLAS collaboration, G. Aad, et al., Search for heavy neutral Higgs bosons produced in association with b -quarks and decaying into b -quarks at $\sqrt{s} = 13$ TeV with the ATLAS detector, Phys. Rev. D 102 (2020) 032004, arXiv:1907.02749.
- [5] ATLAS collaboration, M. Aaboud, et al., Search for heavy particles decaying into top-quark pairs using lepton-plus-jets events in proton-proton collisions at $\sqrt{s} = 13$ TeV with the ATLAS detector, Eur. Phys. J. C 78 (2018) 565, arXiv:1804.10823.

- [6] ATLAS collaboration, M. Aaboud, et al., Search for pair production of Higgs bosons in the $b\bar{b}b\bar{b}$ final state using proton-proton collisions at $\sqrt{s} = 13$ TeV with the ATLAS detector, *J. High Energy Phys.* 01 (2019) 030, arXiv:1804.06174.
- [7] ATLAS collaboration, M. Aaboud, et al., Search for heavy resonances decaying into WW in the $e\nu\mu\nu$ final state in pp collisions at $\sqrt{s} = 13$ TeV with the ATLAS detector, *Eur. Phys. J. C* 78 (2018) 24, arXiv:1710.01123.
- [8] ATLAS collaboration, M. Aaboud, et al., Search for heavy ZZ resonances in the $\ell^+\ell^-\ell^+\ell^-$ and $\ell^+\ell^-\nu\bar{\nu}$ final states using proton-proton collisions at $\sqrt{s} = 13$ TeV with the ATLAS detector, *Eur. Phys. J. C* 78 (2018) 293, arXiv:1712.06386.
- [9] ATLAS collaboration, M. Aaboud, et al., Search for heavy resonances decaying into a W or Z boson and a Higgs boson in final states with leptons and b -jets in 36 fb^{-1} of $\sqrt{s} = 13$ TeV pp collisions with the ATLAS detector, *J. High Energy Phys.* 03 (2018) 174, arXiv:1712.06518.
- [10] ATLAS collaboration, M. Aaboud, et al., Search for charged Higgs bosons decaying into top and bottom quarks at $\sqrt{s} = 13$ TeV with the ATLAS detector, *J. High Energy Phys.* 11 (2018) 085, arXiv:1808.03599.
- [11] ATLAS collaboration, M. Aaboud, et al., Search for charged Higgs bosons decaying via $H^\pm \rightarrow \tau^\pm\nu_\tau$ in the τ +jets and τ +lepton final states with 36 fb^{-1} of pp collision data recorded at $\sqrt{s} = 13$ TeV with the ATLAS experiment, *J. High Energy Phys.* 09 (2018) 139, arXiv:1807.07915.
- [12] CMS collaboration, V. Khachatryan, et al., Search for heavy resonances decaying to tau lepton pairs in proton-proton collisions at $\sqrt{s} = 13$ TeV, *J. High Energy Phys.* 02 (2017) 048, arXiv:1611.06594.
- [13] CMS collaboration, A.M. Sirunyan, et al., Search for beyond the standard model Higgs bosons decaying into a $b\bar{b}$ pair in pp collisions at $\sqrt{s} = 13$ TeV, *J. High Energy Phys.* 08 (2018) 113, arXiv:1805.12191.
- [14] CMS collaboration, A.M. Sirunyan, et al., Search for \tilde{t} resonances in highly boosted lepton+jets and fully hadronic final states in proton-proton collisions at $\sqrt{s} = 13$ TeV, *J. High Energy Phys.* 07 (2017) 001, arXiv:1704.03366.
- [15] CMS collaboration, A. Sirunyan, et al., Search for a massive resonance decaying to a pair of Higgs bosons in the four b quark final state in proton-proton collisions at $\sqrt{s} = 13$ TeV, *Phys. Lett. B* 781 (2018) 244–269, arXiv:1710.04960.
- [16] CMS collaboration, V. Khachatryan, et al., Search for heavy resonances decaying into a vector boson and a Higgs boson in final states with charged leptons, neutrinos, and b quarks, *Phys. Lett. B* 768 (2017) 137–162, arXiv:1610.08066.
- [17] CMS collaboration, A.M. Sirunyan, et al., Search for a heavy pseudoscalar boson decaying to a Z and a Higgs boson at $\sqrt{s} = 13$ TeV, *Eur. Phys. J. C* 79 (2019) 564, arXiv:1903.00941.
- [18] High-Luminosity Large Hadron Collider (HL-LHC): Technical Design Report V. 0.1.
- [19] H. Baer, T. Barklow, K. Fujii, Y. Gao, A. Hoang, S. Kanemura, et al., The international linear collider technical design report - volume 2: physics, arXiv:1306.6352.
- [20] K. Fujii, et al., Physics case for the 250 GeV stage of the international linear collider, arXiv:1710.07621.
- [21] S. Asai, J. Tanaka, Y. Ushiroda, M. Nakao, J. Tian, S. Kanemura, et al., Report by the committee on the scientific case of the ILC operating at 250 GeV as a Higgs factory, arXiv:1710.08639.
- [22] LCC Physics Working Group collaboration, K. Fujii, et al., Tests of the standard model at the international linear collider, arXiv:1908.11299.
- [23] TLEP Design Study Working Group collaboration, M. Bicer, et al., First look at the physics case of TLEP, *J. High Energy Phys.* 01 (2014) 164, arXiv:1308.6176.
- [24] C.-S.S. Group, CEPC-SPPC Preliminary Conceptual Design Report. 1. Physics and Detector.
- [25] S. Dawson, Radiative corrections to Higgs boson production, *Nucl. Phys. B* 359 (1991) 283–300.
- [26] A. Djouadi, M. Spira, P. Zerwas, Production of Higgs bosons in proton colliders: QCD corrections, *Phys. Lett. B* 264 (1991) 440–446.
- [27] M. Spira, A. Djouadi, D. Graudenz, P. Zerwas, Higgs boson production at the LHC, *Nucl. Phys. B* 453 (1995) 17–82, arXiv:hep-ph/9504378.
- [28] S. Kanemura, M. Kikuchi, K. Yagyu, Radiative corrections to the Higgs boson couplings in the model with an additional real singlet scalar field, *Nucl. Phys. B* 907 (2016) 286–322, arXiv:1511.06211.
- [29] S. Kanemura, M. Kikuchi, K. Sakurai, K. Yagyu, Gauge invariant one-loop corrections to Higgs boson couplings in non-minimal Higgs models, *Phys. Rev. D* 96 (2017) 035014, arXiv:1705.05399.
- [30] S. Kanemura, M. Kikuchi, K. Yagyu, One-loop corrections to the Higgs self-couplings in the singlet extension, *Nucl. Phys. B* 917 (2017) 154–177, arXiv:1608.01582.
- [31] S.-P. He, S.-h. Zhu, One-loop radiative correction to the triple Higgs coupling in the Higgs singlet model, *Phys. Lett. B* 764 (2017) 31–37, arXiv:1607.04497.
- [32] S. Kanemura, M. Kikuchi, K. Mawatari, K. Sakurai, K. Yagyu, Loop effects on the Higgs decay widths in extended Higgs models, *Phys. Lett. B* 783 (2018) 140–149, arXiv:1803.01456.

- [33] S. Kanemura, M. Kikuchi, K. Mawatari, K. Sakurai, K. Yagyu, Full next-to-leading-order calculations of Higgs boson decay rates in models with non-minimal scalar sectors, *Nucl. Phys. B* 949 (2019) 114791, arXiv:1906.10070.
- [34] A. Arhrib, M. Capdequi Peyranere, W. Hollik, S. Penaranda, Higgs decays in the two Higgs doublet model: large quantum effects in the decoupling regime, *Phys. Lett. B* 579 (2004) 361–370, arXiv:hep-ph/0307391.
- [35] A. Arhrib, R. Benbrik, J. El Falaki, W. Hollik, Triple Higgs coupling effect on $h^0 \rightarrow b\bar{b}$ and $h^0 \rightarrow \tau^+\tau^-$ in the 2HDM, *Phys. Lett. B* 774 (2017) 195–204, arXiv:1612.09329.
- [36] S. Kanemura, Y. Okada, E. Senaha, C.-P. Yuan, Higgs coupling constants as a probe of new physics, *Phys. Rev. D* 70 (2004) 115002, arXiv:hep-ph/0408364.
- [37] S. Kanemura, M. Kikuchi, K. Yagyu, Radiative corrections to the Yukawa coupling constants in two Higgs doublet models, *Phys. Lett. B* 731 (2014) 27–35, arXiv:1401.0515.
- [38] S. Kanemura, M. Kikuchi, K. Yagyu, Fingerprinting the extended Higgs sector using one-loop corrected Higgs boson couplings and future precision measurements, *Nucl. Phys. B* 896 (2015) 80–137, arXiv:1502.07716.
- [39] J. Gu, H. Li, Z. Liu, S. Su, W. Su, Learning from Higgs physics at future Higgs factories, *J. High Energy Phys.* 12 (2017) 153, arXiv:1709.06103.
- [40] N. Chen, T. Han, S. Su, W. Su, Y. Wu, Type-II 2HDM under the precision measurements at the Z-pole and a Higgs factory, *J. High Energy Phys.* 03 (2019) 023, arXiv:1808.02037.
- [41] T. Han, S. Li, S. Su, W. Su, Y. Wu, Comparative studies of 2HDMs under the Higgs boson precision measurements, arXiv:2008.05492.
- [42] D. Lopez-Val, J. Sola, N. Bernal, Quantum effects on Higgs-strahlung events at linear colliders within the general 2HDM, *Phys. Rev. D* 81 (2010) 113005, arXiv:1003.4312.
- [43] H. Castilla-Valdez, A. Moyotl, M.A. Perez, C.G. Honorato, Sensitivity of the decay $h \rightarrow ZZ^* \rightarrow Zl + l-$ to the Higgs self-coupling through radiative corrections, *Phys. Rev. D* 93 (2016) 055001, arXiv:1512.03872.
- [44] W. Xie, R. Benbrik, A. Habjia, B. Gong, Q.-S. Yan, Signature of 2HDM at Higgs factories, arXiv:1812.02597.
- [45] L. Altenkamp, S. Dittmaier, H. Rzehak, Renormalization schemes for the two-Higgs-doublet model and applications to $h \rightarrow WW/ZZ \rightarrow 4$ fermions, *J. High Energy Phys.* 09 (2017) 134, arXiv:1704.02645.
- [46] L. Altenkamp, S. Dittmaier, H. Rzehak, Precision calculations for $h \rightarrow WW/ZZ \rightarrow 4$ fermions in the two-Higgs-doublet model with Prophecy4f, *J. High Energy Phys.* 03 (2018) 110, arXiv:1710.07598.
- [47] L. Altenkamp, M. Boggia, S. Dittmaier, Precision calculations for $h \rightarrow WW/ZZ \rightarrow 4$ fermions in a singlet extension of the Standard Model with Prophecy4f, *J. High Energy Phys.* 04 (2018) 062, arXiv:1801.07291.
- [48] S. Kanemura, M. Kikuchi, K. Sakurai, Testing the dark matter scenario in the inert doublet model by future precision measurements of the Higgs boson couplings, *Phys. Rev. D* 94 (2016) 115011, arXiv:1605.08520.
- [49] A. Arhrib, R. Benbrik, J. El Falaki, A. Jueid, Radiative corrections to the triple Higgs coupling in the inert Higgs doublet model, *J. High Energy Phys.* 12 (2015) 007, arXiv:1507.03630.
- [50] S. Kanemura, K. Yagyu, Radiative corrections to electroweak parameters in the Higgs triplet model and implication with the recent Higgs boson searches, *Phys. Rev. D* 85 (2012) 115009, arXiv:1201.6287.
- [51] M. Aoki, S. Kanemura, M. Kikuchi, K. Yagyu, Renormalization of the Higgs sector in the triplet model, *Phys. Lett. B* 714 (2012) 279–285, arXiv:1204.1951.
- [52] M. Aoki, S. Kanemura, M. Kikuchi, K. Yagyu, Radiative corrections to the Higgs boson couplings in the triplet model, *Phys. Rev. D* 87 (2013) 015012, arXiv:1211.6029.
- [53] C.-W. Chiang, A.-L. Kuo, K. Yagyu, Radiative corrections to Higgs couplings with weak gauge bosons in custodial multi-Higgs models, *Phys. Lett. B* 774 (2017) 119–122, arXiv:1707.04176.
- [54] C.-W. Chiang, A.-L. Kuo, K. Yagyu, One-loop renormalized Higgs boson vertices in the Georgi-Machacek model, *Phys. Rev. D* 98 (2018) 013008, arXiv:1804.02633.
- [55] S. Kanemura, M. Kikuchi, K. Sakurai, K. Yagyu, H-COUP: a program for one-loop corrected Higgs boson couplings in non-minimal Higgs sectors, *Comput. Phys. Commun.* 233 (2018) 134–144, arXiv:1710.04603.
- [56] S. Kanemura, M. Kikuchi, K. Mawatari, K. Sakurai, K. Yagyu, H-COUP version 2: a program for one-loop corrected Higgs boson decays in non-minimal Higgs sectors, *Comput. Phys. Commun.* 257 (2020) 107512, arXiv:1910.12769.
- [57] M. Krause, M. Mühlleitner, M. Spira, 2HDECAY—a program for the calculation of electroweak one-loop corrections to Higgs decays in the two-Higgs-doublet model including state-of-the-art QCD corrections, *Comput. Phys. Commun.* 246 (2020) 106852, arXiv:1810.00768.
- [58] A. Denner, S. Dittmaier, A. Mück, PROPHECY4F 3.0: a Monte Carlo program for Higgs-boson decays into four-fermion final states in and beyond the Standard Model, *Comput. Phys. Commun.* 254 (2020) 107336, arXiv:1912.02010.
- [59] H.E. Haber, G.L. Kane, The search for supersymmetry: probing physics beyond the standard model, *Phys. Rep.* 117 (1985) 75–263.

- [60] J.F. Gunion, H.E. Haber, G.L. Kane, S. Dawson, *The Higgs Hunter's Guide*, vol. 80, 2000.
- [61] A. Djouadi, The anatomy of electro-weak symmetry breaking. II. The Higgs bosons in the minimal supersymmetric model, *Phys. Rep.* 459 (2008) 1–241, arXiv:hep-ph/0503173.
- [62] A. Bochkarev, S. Kuzmin, M. Shaposhnikov, Electroweak baryogenesis and the Higgs boson mass problem, *Phys. Lett. B* 244 (1990) 275–278.
- [63] L.D. McLerran, M.E. Shaposhnikov, N. Turok, M.B. Voloshin, Why the baryon asymmetry of the universe is approximately 10^{10} , *Phys. Lett. B* 256 (1991) 451–456.
- [64] N. Turok, J. Zadrozny, Electroweak baryogenesis in the two doublet model, *Nucl. Phys. B* 358 (1991) 471–493.
- [65] N. Turok, J. Zadrozny, Phase transitions in the two doublet model, *Nucl. Phys. B* 369 (1992) 729–742.
- [66] K. Funakubo, A. Kakuto, K. Takenaga, The effective potential of electroweak theory with two massless Higgs doublets at finite temperature, *Prog. Theor. Phys.* 91 (1994) 341–352, arXiv:hep-ph/9310267.
- [67] M. Trodden, Electroweak baryogenesis, *Rev. Mod. Phys.* 71 (1999) 1463–1500, arXiv:hep-ph/9803479.
- [68] P. Basler, M. Krause, M. Muhlleitner, J. Wittbrodt, A. Wlotzka, Strong first order electroweak phase transition in the CP-conserving 2HDM revisited, *J. High Energy Phys.* 02 (2017) 121, arXiv:1612.04086.
- [69] P. Basler, M. Muhlleitner, J. Wittbrodt, The CP-violating 2HDM in light of a strong first order electroweak phase transition and implications for Higgs pair production, *J. High Energy Phys.* 03 (2018) 061, arXiv:1711.04097.
- [70] A. Zee, A theory of lepton number violation, neutrino Majorana mass, and oscillation, *Phys. Lett. B* 93 (1980) 389.
- [71] E. Ma, Verifiable radiative seesaw mechanism of neutrino mass and dark matter, *Phys. Rev. D* 73 (2006) 077301, arXiv:hep-ph/0601225.
- [72] M. Aoki, S. Kanemura, O. Seto, Neutrino mass, dark matter and baryon asymmetry via TeV-scale physics without fine-tuning, *Phys. Rev. Lett.* 102 (2009) 051805, arXiv:0807.0361.
- [73] M. Aoki, S. Kanemura, O. Seto, A model of TeV scale physics for neutrino mass, dark matter and baryon asymmetry and its phenomenology, *Phys. Rev. D* 80 (2009) 033007, arXiv:0904.3829.
- [74] DELPHI collaboration, J. Abdallah, et al., Searches for neutral Higgs bosons in extended models, *Eur. Phys. J. C* 38 (2004) 1–28, arXiv:hep-ex/0410017.
- [75] LEPH, DELPHI, L3, OPAL, LEP Working Group for Higgs Boson Searches collaboration, S. Schael, et al., Search for neutral MSSM Higgs bosons at LEP, *Eur. Phys. J. C* 47 (2006) 547–587, arXiv:hep-ex/0602042.
- [76] ALEPH, DELPHI, L3, OPAL, LEP collaboration, G. Abbiendi, et al., Search for charged Higgs bosons: combined results using LEP data, *Eur. Phys. J. C* 73 (2013) 2463, arXiv:1301.6065.
- [77] A. Celis, V. Ilisie, A. Pich, Towards a general analysis of LHC data within two-Higgs-doublet models, *J. High Energy Phys.* 12 (2013) 095, arXiv:1310.7941.
- [78] B. Dumont, J.F. Gunion, Y. Jiang, S. Kraml, Constraints on and future prospects for two-Higgs-doublet models in light of the LHC Higgs signal, *Phys. Rev. D* 90 (2014) 035021, arXiv:1405.3584.
- [79] J. Bernon, J.F. Gunion, Y. Jiang, S. Kraml, Light Higgs bosons in two-Higgs-doublet models, *Phys. Rev. D* 91 (2015) 075019, arXiv:1412.3385.
- [80] N. Craig, F. D'Eramo, P. Draper, S. Thomas, H. Zhang, The hunt for the rest of the Higgs bosons, *J. High Energy Phys.* 06 (2015) 137, arXiv:1504.04630.
- [81] J. Bernon, J.F. Gunion, H.E. Haber, Y. Jiang, S. Kraml, Scrutinizing the alignment limit in two-Higgs-doublet models: $m_h = 125$ GeV, *Phys. Rev. D* 92 (2015) 075004, arXiv:1507.00933.
- [82] J. Bernon, J.F. Gunion, H.E. Haber, Y. Jiang, S. Kraml, Scrutinizing the alignment limit in two-Higgs-doublet models. II. $m_H = 125$ GeV, *Phys. Rev. D* 93 (2016) 035027, arXiv:1511.03682.
- [83] D. Chowdhury, O. Eberhardt, Update of global two-Higgs-doublet model fits, *J. High Energy Phys.* 05 (2018) 161, arXiv:1711.02095.
- [84] W. Su, M. White, A.G. Williams, Y. Wu, Exploring the low $\tan\beta$ region of two Higgs doublet models at the LHC, arXiv:1909.09035.
- [85] F. Kling, S. Su, W. Su, 2HDM neutral scalars under the LHC, *J. High Energy Phys.* 06 (2020) 163, arXiv:2004.04172.
- [86] S. Kanemura, H. Yokoya, Y.-J. Zheng, Complementarity in direct searches for additional Higgs bosons at the LHC and the international linear collider, *Nucl. Phys. B* 886 (2014) 524–553, arXiv:1404.5835.
- [87] S. Kanemura, K. Tsumura, K. Yagyu, H. Yokoya, Fingerprinting nonminimal Higgs sectors, *Phys. Rev. D* 90 (2014) 075001, arXiv:1406.3294.
- [88] J. Haller, A. Hoecker, R. Kogler, K. Mönig, T. Peiffer, J. Stelzer, Update of the global electroweak fit and constraints on two-Higgs-doublet models, *Eur. Phys. J. C* 78 (2018) 675, arXiv:1803.01853.
- [89] J. Gunion, L. Roszkowski, A. Turski, H. Haber, G. Gamberini, B. Kayser, et al., Production mechanisms for nonminimal Higgs bosons at an e^+e^- collider, *Phys. Rev. D* 38 (1988) 3444.

- [90] A. Djouadi, H. Haber, P. Zerwas, Multiple production of MSSM neutral Higgs bosons at high-energy e^+e^- colliders, *Phys. Lett. B* 375 (1996) 203–212, arXiv:hep-ph/9602234.
- [91] S. Kanemura, S. Moretti, K. Odagiri, Single charged Higgs boson production at next generation linear colliders, *J. High Energy Phys.* 02 (2001) 011, arXiv:hep-ph/0012030.
- [92] S. Moretti, Detection of heavy charged Higgs bosons at future linear colliders, *Eur. Phys. J. direct* 4 (2002) 15, arXiv:hep-ph/0206208.
- [93] M. Cepeda, et al., Report from working group 2: Higgs physics at the HL-LHC and HE-LHC 7 (12, 2019) 221–584, <https://doi.org/10.23731/CYRM-2019-007.221>, arXiv:1902.00134.
- [94] S. Kanemura, K. Yagyu, Unitarity bound in the most general two Higgs doublet model, *Phys. Lett. B* 751 (2015) 289–296, arXiv:1509.06060.
- [95] S. Blasi, S. De Curtis, K. Yagyu, Extracting the mass scale of a second Higgs boson from a deviation in $h(125)$ couplings, *J. High Energy Phys.* 09 (2017) 091, arXiv:1707.05273.
- [96] S.L. Glashow, S. Weinberg, Natural conservation laws for neutral currents, *Phys. Rev. D* 15 (1977) 1958.
- [97] H. Georgi, D.V. Nanopoulos, Suppression of flavor changing effects from neutral spinless meson exchange in gauge theories, *Phys. Lett. B* 82 (1979) 95–96.
- [98] J.F. Donoghue, L.F. Li, Properties of charged Higgs bosons, *Phys. Rev. D* 19 (1979) 945.
- [99] J.F. Gunion, H.E. Haber, The CP conserving two Higgs doublet model: the approach to the decoupling limit, *Phys. Rev. D* 67 (2003) 075019, arXiv:hep-ph/0207010.
- [100] V.D. Barger, J.L. Hewett, R.J.N. Phillips, New constraints on the charged Higgs sector in two Higgs doublet models, *Phys. Rev. D* 41 (1990) 3421–3441.
- [101] Y. Grossman, Phenomenology of models with more than two Higgs doublets, *Nucl. Phys. B* 426 (1994) 355–384, arXiv:hep-ph/9401311.
- [102] M. Aoki, S. Kanemura, K. Tsumura, K. Yagyu, Models of Yukawa interaction in the two Higgs doublet model, and their collider phenomenology, *Phys. Rev. D* 80 (2009) 015017, arXiv:0902.4665.
- [103] T. Appelquist, J. Carazzone, Infrared singularities and massive fields, *Phys. Rev. D* 11 (1975) 2856.
- [104] B.W. Lee, C. Quigg, H. Thacker, Weak interactions at very high-energies: the role of the Higgs boson mass, *Phys. Rev. D* 16 (1977) 1519.
- [105] S. Kanemura, T. Kubota, E. Takasugi, Lee-Quigg-Thacker bounds for Higgs boson masses in a two doublet model, *Phys. Lett. B* 313 (1993) 155–160, arXiv:hep-ph/9303263.
- [106] A.G. Akeroyd, A. Arhrib, E.-M. Naimi, Note on tree level unitarity in the general two Higgs doublet model, *Phys. Lett. B* 490 (2000) 119–124, arXiv:hep-ph/0006035.
- [107] I.F. Ginzburg, I.P. Ivanov, Tree-level unitarity constraints in the most general 2HDM, *Phys. Rev. D* 72 (2005) 115010, arXiv:hep-ph/0508020.
- [108] J.M. Cornwall, D.N. Levin, G. Tiktopoulos, Derivation of gauge invariance from high-energy unitarity bounds on the s matrix, *Phys. Rev. D* 10 (1974) 1145.
- [109] N.G. Deshpande, E. Ma, Pattern of symmetry breaking with two Higgs doublets, *Phys. Rev. D* 18 (1978) 2574.
- [110] K. Klimenko, On necessary and sufficient conditions for some Higgs potentials to be bounded from below, *Theor. Math. Phys.* 62 (1985) 58–65.
- [111] M. Sher, Electroweak Higgs potentials and vacuum stability, *Phys. Rep.* 179 (1989) 273–418.
- [112] S. Nie, M. Sher, Vacuum stability bounds in the two Higgs doublet model, *Phys. Lett. B* 449 (1999) 89–92, arXiv:hep-ph/9811234.
- [113] A. Barroso, P. Ferreira, I. Ivanov, R. Santos, Metastability bounds on the two Higgs doublet model, *J. High Energy Phys.* 06 (2013) 045, arXiv:1303.5098.
- [114] T. Enomoto, R. Watanabe, Flavor constraints on the two Higgs doublet models of Z_2 symmetric and aligned types, *J. High Energy Phys.* 05 (2016) 002, arXiv:1511.05066.
- [115] M. Misiak, A. Rehman, M. Steinhauser, Towards $\bar{B} \rightarrow X_s \gamma$ at the NNLO in QCD without interpolation in m_c , *J. High Energy Phys.* 06 (2020) 175, arXiv:2002.01548.
- [116] M. Misiak, M. Steinhauser, Weak radiative decays of the B meson and bounds on M_{H^\pm} in the two-Higgs-doublet model, *Eur. Phys. J. C* 77 (2017) 201, arXiv:1702.04571.
- [117] M. Krawczyk, D. Temes, 2HDM(II) radiative corrections in leptonic tau decays, *Eur. Phys. J. C* 44 (2005) 435–446, arXiv:hep-ph/0410248.
- [118] T. Abe, R. Sato, K. Yagyu, Lepton-specific two Higgs doublet model as a solution of muon $g - 2$ anomaly, *J. High Energy Phys.* 07 (2015) 064, arXiv:1504.07059.
- [119] A. Djouadi, The anatomy of electro-weak symmetry breaking. I: The Higgs boson in the standard model, *Phys. Rep.* 457 (2008) 1–216, arXiv:hep-ph/0503172.

- [120] S. Gorishnii, A. Kataev, S. Larin, L. Surguladze, Scheme dependence of the next to next-to-leading QCD corrections to Gamma(tot) ($H^0 \rightarrow$ hadrons) and the spurious QCD infrared fixed point, Phys. Rev. D 43 (1991) 1633–1640.
- [121] K. Chetyrkin, B.A. Kniehl, M. Steinhauser, Strong coupling constant with flavor thresholds at four loops in the MS scheme, Phys. Rev. Lett. 79 (1997) 2184–2187, arXiv:hep-ph/9706430.
- [122] N. Gray, D.J. Broadhurst, W. Grafe, K. Schilcher, Three loop relation of quark (modified) Ms and pole masses, Z. Phys. C 48 (1990) 673–680.
- [123] K. Chetyrkin, M. Steinhauser, Short distance mass of a heavy quark at order α_s^3 , Phys. Rev. Lett. 83 (1999) 4001–4004, arXiv:hep-ph/9907509.
- [124] K. Chetyrkin, M. Steinhauser, The relation between the MS-bar and the on-shell quark mass at order $\alpha(s)^{**3}$, Nucl. Phys. B 573 (2000) 617–651, arXiv:hep-ph/9911434.
- [125] K. Melnikov, T.v. Ritbergen, The three loop relation between the MS-bar and the pole quark masses, Phys. Lett. B 482 (2000) 99–108, arXiv:hep-ph/9912391.
- [126] K. Chetyrkin, Quark mass anomalous dimension to O ($\alpha\text{-s}^{**4}$), Phys. Lett. B 404 (1997) 161–165, arXiv:hep-ph/9703278.
- [127] J. Vermaseren, S. Larin, T. van Ritbergen, The four loop quark mass anomalous dimension and the invariant quark mass, Phys. Lett. B 405 (1997) 327–333, arXiv:hep-ph/9703284.
- [128] K. Chetyrkin, B.A. Kniehl, M. Steinhauser, Decoupling relations to O ($\alpha\text{-s}^{**3}$) and their connection to low-energy theorems, Nucl. Phys. B 510 (1998) 61–87, arXiv:hep-ph/9708255.
- [129] W. Bernreuther, W. Wetzel, Decoupling of heavy quarks in the minimal subtraction scheme, Nucl. Phys. B 197 (1982) 228–236.
- [130] W. Bernreuther, Decoupling of heavy quarks in quantum chromodynamics, Ann. Phys. 151 (1983) 127.
- [131] L. Mihaila, B. Schmidt, M. Steinhauser, $\Gamma(H \rightarrow b\bar{b})$ to order $\alpha\alpha_s$, Phys. Lett. B 751 (2015) 442–447, arXiv:1509.02294.
- [132] S. Gorishnii, A. Kataev, S. Larin, L. Surguladze, Corrected three loop QCD correction to the correlator of the quark scalar currents and γ (Tot) ($H^0 \rightarrow$ hadrons), Mod. Phys. Lett. A 5 (1990) 2703–2712.
- [133] K. Chetyrkin, A. Kwiatkowski, Second order QCD corrections to scalar and pseudoscalar Higgs decays into massive bottom quarks, Nucl. Phys. B 461 (1996) 3–18, arXiv:hep-ph/9505358.
- [134] S. Larin, T. van Ritbergen, J. Vermaseren, The large top quark mass expansion for Higgs boson decays into bottom quarks and into gluons, Phys. Lett. B 362 (1995) 134–140, arXiv:hep-ph/9506465.
- [135] E. Braaten, J. Leveille, Higgs boson decay and the running mass, Phys. Rev. D 22 (1980) 715.
- [136] M. Drees, K.-i. Hikasa, Heavy quark thresholds in Higgs physics, Phys. Rev. D 41 (1990) 1547.
- [137] A. Djouadi, J. Kalinowski, M. Spira, HDECAY: a program for Higgs boson decays in the standard model and its supersymmetric extension, Comput. Phys. Commun. 108 (1998) 56–74, arXiv:hep-ph/9704448.
- [138] D. Albert, W.J. Marciano, D. Wyler, Z. Parsa, Decays of intermediate vector bosons, radiative corrections and QCD jets, Nucl. Phys. B 166 (1980) 460–492.
- [139] S. Dawson, R. Kauffman, QCD corrections to Higgs boson production: nonleading terms in the heavy quark limit, Phys. Rev. D 49 (1994) 2298–2309, arXiv:hep-ph/9310281.
- [140] R. Harlander, P. Kant, Higgs production and decay: analytic results at next-to-leading order QCD, J. High Energy Phys. 12 (2005) 015, arXiv:hep-ph/0509189.
- [141] M. Steinhauser, Corrections of O ($\alpha\text{-s}^2$) to the decay of an intermediate mass Higgs boson into two photons, in: Ringberg Workshop: the Higgs Puzzle - What Can We Learn from LEP2, LHC, NLC, and FMC?, 12, 1996, pp. 177–185, arXiv:hep-ph/9612395.
- [142] K. Chetyrkin, B.A. Kniehl, M. Steinhauser, Hadronic Higgs decay to order $\alpha\text{-s}^{**4}$, Phys. Rev. Lett. 79 (1997) 353–356, arXiv:hep-ph/9705240.
- [143] K. Chetyrkin, B.A. Kniehl, M. Steinhauser, W.A. Bardeen, Effective QCD interactions of CP odd Higgs bosons at three loops, Nucl. Phys. B 535 (1998) 3–18, arXiv:hep-ph/9807241.
- [144] A. Djouadi, P. Gambino, QCD corrections to Higgs boson selfenergies and fermionic decay widths, Phys. Rev. D 51 (1995) 218–228, arXiv:hep-ph/9406431.
- [145] M. Capdequi Peyranere, H.E. Haber, P. Irulegui, $H^\pm \rightarrow W^\pm\gamma$ and $H^\pm \rightarrow W^\pm Z$ in two Higgs doublet models. 1. The large fermion mass limit, Phys. Rev. D 44 (1991) 191–201.
- [146] S. Kanemura, Enhancement of loop induced $H^\pm W^\mp Z^0$ vertex in two Higgs doublet model, Phys. Rev. D 61 (2000) 095001, arXiv:hep-ph/9710237.
- [147] J. Diaz-Cruz, J. Hernandez-Sanchez, J. Toscano, An effective Lagrangian description of charged Higgs decays $H^\pm \rightarrow W^\pm\gamma$, $W^\pm Z$ and $W^\pm h_0$, Phys. Lett. B 512 (2001) 339–348, arXiv:hep-ph/0106001.
- [148] J. Hernandez-Sanchez, M. Perez, G. Tavares-Velasco, J. Toscano, Decay $H^\pm \rightarrow W^\pm\gamma$ in a nonlinear R_ξ -gauge, Phys. Rev. D 69 (2004) 095008, arXiv:hep-ph/0402284.

- [149] A. Arhrib, R. Benbrik, M. Chabab, Charged Higgs bosons decays $H^\pm \rightarrow W^\pm (\gamma, Z)$ revisited, *J. Phys. G* 34 (2007) 907–928, arXiv:hep-ph/0607182.
- [150] G. Abbas, D. Das, M. Patra, Loop induced $H^\pm \rightarrow W^\pm Z$ decays in the aligned two-Higgs-doublet model, *Phys. Rev. D* 98 (2018) 115013, arXiv:1806.11035.
- [151] M. Aiko, S. Kanemura, M. Kikuchi, K. Sakurai, K. Yagyu, in preparation.
- [152] S. Buehler, C. Duhr, CHAPLIN - complex harmonic polylogarithms in Fortran, *Comput. Phys. Commun.* 185 (2014) 2703–2713, arXiv:1106.5739.
- [153] D. Eriksson, J. Rathsman, O. Stal, 2HDMC: two-Higgs-doublet model calculator physics and manual, *Comput. Phys. Commun.* 181 (2010) 189–205, arXiv:0902.0851.
- [154] Particle Data Group collaboration, P. Zyla, et al., *Rev. Part. Phys. PTEP* 2020 (2020), 083C01.
- [155] S. Alekhin, J. Blumlein, S. Moch, The ABM parton distributions tuned to LHC data, *Phys. Rev. D* 89 (2014) 054028, arXiv:1310.3059.
- [156] ALPHA, UKQCD collaboration, J. Garden, J. Heitger, R. Sommer, H. Wittig, Precision computation of the strange quark's mass in quenched QCD, *Nucl. Phys. B* 571 (2000) 237–256, arXiv:hep-lat/9906013.
- [157] Particle Data Group collaboration, M. Tanabashi, et al., Review of particle physics, *Phys. Rev. D* 98 (2018) 030001.
- [158] M. Krause, R. Lorenz, M. Muhlleitner, R. Santos, H. Ziesche, Gauge-independent renormalization of the 2-Higgs-doublet model, *J. High Energy Phys.* 09 (2016) 143, arXiv:1605.04853.
- [159] M. Krause, M. Muhlleitner, R. Santos, H. Ziesche, Higgs-to-Higgs boson decays in a 2HDM at next-to-leading order, *Phys. Rev. D* 95 (2017) 075019, arXiv:1609.04185.
- [160] M. Krause, M. Muhlleitner, Impact of electroweak corrections on neutral Higgs boson decays in extended Higgs sectors, *J. High Energy Phys.* 04 (2020) 083, arXiv:1912.03948.
- [161] A. Denner, S. Dittmaier, J.-N. Lang, Renormalization of mixing angles, *J. High Energy Phys.* 11 (2018) 104, arXiv:1808.03466.
- [162] R.V. Harlander, S. Liebler, H. Mantler, SusHi: a program for the calculation of Higgs production in gluon fusion and bottom-quark annihilation in the Standard Model and the MSSM, *Comput. Phys. Commun.* 184 (2013) 1605–1617, arXiv:1212.3249.
- [163] R.V. Harlander, S. Liebler, H. Mantler, SusHi Bento: beyond NNLO and the heavy-top limit, *Comput. Phys. Commun.* 212 (2017) 239–257, arXiv:1605.03190.
- [164] LHC Higgs Cross Section Working Group collaboration, D. de Florian, et al., Handbook of LHC Higgs cross sections: 4. Deciphering the nature of the Higgs sector, arXiv:1610.07922.
- [165] E.L. Berger, T. Han, J. Jiang, T. Plehn, Associated production of a top quark and a charged Higgs boson, *Phys. Rev. D* 71 (2005) 115012, arXiv:hep-ph/0312286.
- [166] S. Dittmaier, M. Kramer, M. Spira, M. Walsler, Charged-Higgs-boson production at the LHC: NLO supersymmetric QCD corrections, *Phys. Rev. D* 83 (2011) 055005, arXiv:0906.2648.
- [167] M. Flechl, R. Klees, M. Kramer, M. Spira, M. Ubiali, Improved cross-section predictions for heavy charged Higgs boson production at the LHC, *Phys. Rev. D* 91 (2015) 075015, arXiv:1409.5615.
- [168] C. Degrande, M. Ubiali, M. Wiesemann, M. Zaro, Heavy charged Higgs boson production at the LHC, *J. High Energy Phys.* 10 (2015) 145, arXiv:1507.02549.
- [169] ATLAS collaboration, G. Aad, et al., Search for heavy Higgs bosons decaying into two tau leptons with the ATLAS detector using pp collisions at $\sqrt{s} = 13$ TeV, *Phys. Rev. Lett.* 125 (2020) 051801, arXiv:2002.12223.
- [170] A. Arbey, F. Mahmoudi, O. Stal, T. Stefaniak, Status of the charged Higgs boson in two Higgs doublet models, *Eur. Phys. J. C* 78 (2018) 182, arXiv:1706.07414.
- [171] A. Arhrib, R. Benbrik, H. Harouiz, S. Moretti, A. Rouchad, A guidebook to hunting charged Higgs bosons at the LHC, arXiv:1810.09106.
- [172] D. Dicus, J. Hewett, C. Kao, T. Rizzo, $W^\pm H^\mp$ production at hadron colliders, *Phys. Rev. D* 40 (1989) 787.
- [173] A. Barrientos Bendezu, B.A. Kniehl, $W^\pm H^\mp$ associated production at the large hadron collider, *Phys. Rev. D* 59 (1999) 015009, arXiv:hep-ph/9807480.
- [174] S. Moretti, K. Odagiri, The phenomenology of $W^\pm H^\mp$ production at the large hadron collider, *Phys. Rev. D* 59 (1999) 055008, arXiv:hep-ph/9809244.
- [175] A. Akeroyd, et al., Prospects for charged Higgs searches at the LHC, *Eur. Phys. J. C* 77 (2017) 276, arXiv:1607.01320.
- [176] S. Moretti, Pair production of charged Higgs scalars from electroweak gauge boson fusion, *J. Phys. G* 28 (2002) 2567–2582, arXiv:hep-ph/0102116.
- [177] A. Alves, T. Plehn, Charged Higgs boson pairs at the CERN LHC, *Phys. Rev. D* 71 (2005) 115014, arXiv:hep-ph/0503135.
- [178] O. Brein, W. Hollik, S. Kanemura, The MSSM prediction for $W^\pm H^\pm$ production by gluon fusion, *Phys. Rev. D* 63 (2001) 095001, arXiv:hep-ph/0008308.

- [179] O. Brein, W. Hollik, Pair production of charged MSSM Higgs bosons by gluon fusion, *Eur. Phys. J. C* 13 (2000) 175–184, arXiv:hep-ph/9908529.
- [180] S. Kanemura, K. Tsumura, H. Yokoya, Multi-tau-lepton signatures at the LHC in the two Higgs doublet model, *Phys. Rev. D* 85 (2012) 095001, arXiv:1111.6089.
- [181] ATLAS collaboration, G. Aad, et al., A search for $t\bar{t}$ resonances using lepton-plus-jets events in proton-proton collisions at $\sqrt{s} = 8$ TeV with the ATLAS detector, *J. High Energy Phys.* 08 (2015) 148, arXiv:1505.07018.
- [182] G. Passarino, M.J.G. Veltman, One loop corrections for e^+e^- annihilation into $\mu^+\mu^-$ in the Weinberg model, *Nucl. Phys. B* 160 (1979) 151–207.
- [183] S. Kanemura, Possible enhancement of the $e^+e^- \rightarrow H^\pm W^\mp$ cross-section in the two Higgs doublet model, *Eur. Phys. J. C* 17 (2000) 473–486, arXiv:hep-ph/9911541.